



3PL BRIGHT SPOTS

2014's domestic growth sets the stage for bigger 3PL gains

By Richard Armstrong

THIRD-PARTY LOGISTICS IS a key element of a U.S. economy that is the primary bright spot in the long tunnel of the global economic recovery. In particular, the truck-related components of domestic third-party logistics have prospered during the current economic expansion.

The driver shortage has created an uneven seller's market in trucking, increasing shipper willingness to buy dedicated contract carriage. DCC has the advantage of guaranteeing capacity.

The leading dedicated contract carriers increased their number of trucks 6.8 percent in 2014 from 2013. Current hours-of-service requirements have lowered productivity by 3.4 percent, increasing the capacity crunch. J.B. Hunt Transport Services is expected to have increased DCC revenue by 12 percent for 2014. Other major truckload carriers are expected to report similar positive results in DCC. We estimate DCC net revenue grew to \$12.5 billion in 2014.

Domestic transportation management is another segment of third-party logistics benefiting from the search for truck capacity. DTM includes traditional freight brokerage and information systems-based transportation management. For domestic transportation management companies such as Echo Global Logistics, this divides into transactional and large enterprise components. Transplace is a good example

of a 3PL with a large customer, systems-based approach optimizing each day's shipments. Transplace is expanding its traditional load-by-load brokerage, but it is a minority of its business.

Echo, Coyote Logistics, TQL, and Mode Transportation are thriving with double-digit growth in the expanding DTM sector. Domestic transportation management gross and net revenues for 2014 are estimated at \$53.9 billion and \$7.7 billion, respectively.

C.H. Robinson is still the largest company by far in this segment with \$14 billion in gross revenue and \$2.1 billion in net revenue, including its recent acquisition of Freightquote. Freightquote is a survivor of the dot.com era whose addition will bring C.H. Robinson's less-than-truckload business to \$1.7 billion a year.

Another important DTM acquisition was Coyote's purchase of Access America Transport. A less publicized, but important consolidation move in this space

was Transplace's acquisition of Logistics Management Solutions, which will help the Frisco, Texas-based 3PL expand its chemical industry activity.

Given slow growth rates for global GDP (2.8 percent) and trade (3.1 percent) for 2014, international transportation management growth was muted. Expeditors International, the market leader, had a 6 percent gross revenue increase. Air freight and ocean freight were up 4 percent, based on estimates from financial analyst Baird. Expeditors handled more than 950,000 20-foot-equivalent units of containerized cargo and 795,000 metric tons of air freight. Asia-North America lanes accounted for about 80 percent of Expeditors' business.

Kuehne + Nagel's gross and net revenues were flat unless one does constant currency calculations and adjustments, although its EBIT improved by 8.2 percent. Kuehne + Nagel's containerized ocean volumes increased 8 percent, to

2014 ESTIMATED GROSS AND NET REVENUES

■ In billions of dollars. 2014 figures are estimates.

3PL SEGMENT	2014 GROSS REVENUE	2014 NET REVENUE	2014 vs 2013 NET REVENUE GROWTH
DTM	\$53.9	\$7.7	8.5%
ITM	\$48.3	\$18.8	4.5%
DCC	\$12.8	\$12.5	5.8%
VAWD	\$37.2	\$28.7	3.5%
TOTAL	\$152.2	\$67.7	4.7%



TOP 10 NORTH AMERICAN BASED 3PLS

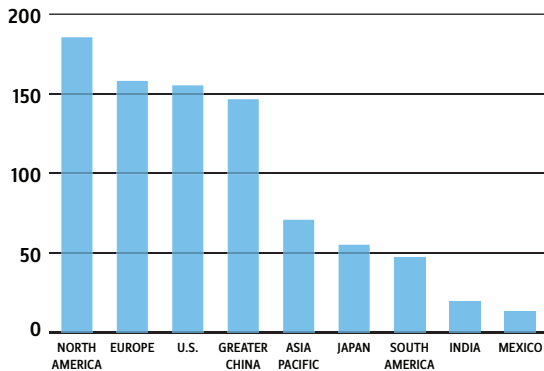
■ Ranked by units in dedicated contract carriage

	TOTAL POWER UNITS
J.B. HUNT (JBI, DCS AND ICS)	6,512
RYDER SUPPLY CHAIN SOLUTIONS	4,538
UNIVERSAL TRUCKLOAD SERVICES	4,219
CARDINAL LOGISTICS MANAGEMENT	4,139
SCHNEIDER NATIONAL DEDICATED SERVICES	3,950
RUAN TRANSPORT CORPORATION	3,690
WERNER ENTERPRISES DEDICATED & LOGISTICS	3,467
SWIFT TRANSPORTATION	3,451
HUB GROUP	2,800
NFI	2,105

Source: Armstrong & Associates Who's Who in Logistics Online Guide Database as of Dec. 1, 2014.

GROSS 3PL REVENUE BY KEY REGIONS AND COUNTRIES

■ In billions of U.S. dollars



3.6 million TEUs, and air freight increased 5 percent to nearly 1.2 million metric tons.

Panalpina, DHL, UTi, APL and other international transportation management companies had lackluster results. The biggest stories outside the U.S. are in the Asia-Pacific region. Kerry Logistics purchased forwarder Lead Logistics for more Australia-New Zealand coverage, and is looking for North America prospects.

Interesting changes are occurring for 3PLs owned by container lines. Singapore's Neptune Orient Lines is looking to spin off its APL Logistics subsidiary, with final bidders being KKR & Co., CJ Korea Express and XPO Logistics.

A similarly motivated Asia-Pacific deal was Li & Fung's purchase of China Container Line last March, and Maersk Group could spin off its Damco logistics subsidiary.

UTi Worldwide, which has struggled with IT modernization, also has been

on the block. Negotiations with Danish logistics and trucking company DSV broke down in December when Bloomberg published news of a potential deal, and UTi's stock price jumped.

Major ongoing operational issues for ITM companies were port congestion and container ship route modifications. Transit times for containerized cargo from Shanghai to Chicago ran 25 to 30 days, and congestion crippled many West Coast ports, with delays at Los Angeles-Long Beach reaching 10 to 12 days — or more — as ships lined up offshore.

Value-added warehousing and distribution grew modestly but steadily. Excess building capacity has fallen in key markets and there is some new growth. The most hyped value-added warehousing and distribution stories involve e-commerce expansions. With adjustments, e-commerce takes up 10 percent of the U.S. retail market. Major 3PLs such as

TOP 20 INTERNATIONAL TRANSPORTATION MANAGEMENT 3PLS

■ By total ocean TEUs managed

Largest 20 providers, by total TEUs

	TOTAL ANNUAL OCEAN TEUS	TOTAL ANNUAL AIR FREIGHT METRIC TONS
KUEHNE + NAGEL INTERNATIONAL	3,578,000	1,134,000
DHL SUPPLY CHAIN & GLOBAL FORWARDING	2,807,000	2,215,000
SINOTRANS	2,600,000	396,100
DB SCHENKER LOGISTICS	1,891,000	1,092,000
PANTOS LOGISTICS	1,753,547	224,865
PANALPINA WORLD TRANSPORT	1,495,400	825,100
EXPEDITORS	916,168	764,376
DAMCO INTERNATIONAL	791,535	226,626
SDV (BOLLORÉ GROUP)	790,000	522,000
NIPPON EXPRESS	776,576	668,522
KERRY LOGISTICS	774,000	278,000
DSV	772,142	259,365
CEVA LOGISTICS	730,750	513,000
UPS SUPPLY CHAIN SOLUTIONS	700,000	912,500
HELLMANN WORLDWIDE LOGISTICS	684,156	549,948
OOCL LOGISTICS	580,000	0
YUSEN LOGISTICS	550,000	310,000
UTI WORLDWIDE	547,000	368,000
LF LOGISTICS	540,000	6,000
LOGWIN	530,000	143,000

Source: Armstrong & Associates Who's Who in Logistics Online Guide Database as of Dec. 1, 2014.

Genco and Menlo Logistics already are engaged heavily in — and well-prepared for — e-commerce and multichannel warehousing. Labor management and transparent IT are key capabilities for e-commerce providers. Most value-added warehousing and distribution companies now have key long-term partners, with some, including Kenco, emphasizing cost-plus arrangements.

A significant growth area for 3PLs has been cross-border traffic with Mexico, where there are now 28 automotive assembly plants. Monterrey is home to extensive industrial manufacturing, and Guadalajara is a hub for high-tech and electronics. All told, 80 percent of Mexico's exports move to the U.S., with the primary products being cars, computers, televisions and parts. The U.S. sends parts, machinery and plastics south.

DHL, APL and Ryder have extensive operations. APL has a joint venture,

VASCOR, with a Toyota affiliate that handles extensive parts movements southbound and cars northbound. 3PL operations in Mexico are on a par with those in the United States. Major Mexican-owned dedicated contract carrier and value-added warehousing and distribution operations are well-run. Value-added warehousing and distribution locations include pick lines, radio-frequency identification and other modern features. Larger dedicated contract carrier operations have strict safety and driver controls. FEMSA Logistica drivers, for example, all have cell phones, and their tractors are tracked by GPS. Each tractor also has an emergency signaling system. Press the button and



AFNR / Shutterstock.com

THE IMPACT OF THIRD-PARTY LOGISTICS IN MAJOR DEVELOPING COUNTRIES CONTINUES TO GROW AS THEY MODERNIZE.

central dispatch knows the driver is in trouble and his location.

FEMSA also has a freight brokerage operation. In line with recent operating authority grants to 13 Mexican trucking companies, it's logical that a \$20 billion company such as FEMSA could consider expanding in the U.S.

Solid Mexican carriers such as Laredo, Texas-based Super Transport International and Chihuahua, Mexico-based GCC Transporte have strong safety programs. Granting them full operating authority is a step in the right direction toward eliminating the messy, two-step process in place for border crossing.

Estimated 3PL gross revenues in Mexico were \$13.4 billion last year. Armstrong & Associates' 2013 analysis of cross-border truck traffic shows that the average truckload value is \$52,900, with three-fourths of truckloads having carloads valued at less than \$80,000. Freight to the U.S. is worth \$2.36 a pound, according to the U.S. Department of Transportation.

Unlike North America, Europe continues to fluctuate in and out of recession, which, combined with economic austerity, is hurting its output. Based on 2014 regional revenue, Armstrong & Associates estimates 3PLs operating in the Europe region have penetrated 24 percent of the total potential market.

Consequently, the trend to outsource logistics functions to 3PLs continues to provide for growth over and above the overall economy. The best European-based 3PLs have made acquisitions to globalize their operations and participate in developing markets with higher rates of growth. Trucking in Europe has grown dramatically through the addition of smaller owner-operators, particularly in Poland.

North America has benefited from an improving U.S. economy with increasing manufacturing levels, the near-shoring of some manufacturing to Mexico and the impact of oil and natural gas surpluses.

When we look at regions, Asia-

Pacific is the largest at \$272.7 billion. We expect Asia-Pacific 3PL revenues to grow by a compound annual growth rate of about 6 percent over the next few years, led by India at 8.8 percent and Greater China at 8.1 percent.

The impact of third-party logistics in major developing countries continues to grow as they modernize. As Frank Lange of Alder Creek Consulting points out, global 3PLs continue to have the strongest overall operations in post-industrial countries. In developing countries, global 3PLs must be very good at integrating local expertise to match cultures to profitable business. DHL, for example, has done an excellent job in Brazil, and UPS has moved strongly in China.

Hot topics this year should be increased IT impact from smartphones, expanded visibility to freight and inventories, supply chains disrupted by container lines, practices, congested ports, railroad malaise about intermodal, and tight truck capacity. In short, there's plenty to keep 3PLs, transportation companies and customers busy.

It also looks like a year of good financial results for 3PLs in the U.S. and Asia. The challenge won't be slow GDP growth in these locations, but how well the 3PLs can control costs and innovate. **joc**

Richard Armstrong is chairman of Armstrong & Associates, a Wisconsin-based consulting firm for logistics companies, motor carriers and shippers. Contact him at dick@3plogistics.com.

WHAT IF _____ WAS

YOUR PRODUCT NAME

ALWAYS IN STOCK EVEN IF DEMAND

INCREASED BY _____ ?

PERCENTAGE

ACCELERATE YOUR ADVANTAGE[®]

Find out more at accelerateyouradvantage.com

800.323.7587 | solutions@chrobinson.com



C.H. ROBINSON

»Accelerate Your Advantage[®]

By Jeff Primeau

ACTING LIKE A LEAD LOGISTICS PROVIDER

DISTRIBUTION COMPANIES ARE having a difficult time adjusting their operating model to support the emergence of the omnichannel, and some are turning to lead logistics providers to overcome these challenges. But how can companies that prefer to keep their operations in-house leverage some of the best practices used by lead logistics providers in order to reduce costs and increase their bottom line? By following these three steps, distribution companies can do just that

INVEST IN THE RIGHT TECHNOLOGIES

Although mid-market companies might not have the same budget as larger companies or lead logistics providers, it's still important for them to have a

Other execution systems that are often overlooked are transportation management systems. It's true that they help companies minimize costs by selecting the ideal provider while respecting customer's expectations, but they also help reconcile the different types of surcharges.

These premiums too often are unreconciled and paid on a monthly basis as an aggregate expense. Understanding the breakdowns of these costs can help companies drastically reduce their transportation spending. Come year-end, companies that understand in detail their transportation spending will be in a better position to negotiate new contracts with carriers.

customer satisfaction and reduce operating costs by working with their customers so they also order standard quantities of items — rounding up to pack, case, layer or pallet quantities. This reduces the number of touches required to fulfill an order and minimizes order-processing costs.

MAKE EVERY MOVE COUNT AND MAKE SPACE A PREMIUM

Lead logistics providers primarily make money on touches and space allocation, requiring them to have great reporting capabilities. Companies should mimic this behavior and allocate costs to each product's journey through the enterprise. By doing this, the purchasing department's decisions won't only be based on procurement costs but also will include charges such as receiving and storage. These costs are rarely

included in procurement decisions, but have shown to have a great impact on a product's margin.

With this detailed information in hand, lead logistics providers are also great at regularly managing each product's lifecycle. When a product is launched, there's typically an initial push to fill the store shelves, which requires an orchestrated collaboration so that all stores receive their products on time. As sales decline, it's important to reallocate the right space for this product in the distribution center. Most importantly is taking care of products with no more demand so actions can be taken to remove them from inventory and free up valuable storage capacity.

One of the main advantages lead logistics providers have is scale — the ability to invest in software and spread that cost over more customers, for example. But the tactics we just described are universally applicable and should help companies reduce their operating costs.

Jeff Primeau is a senior manager in the supply chain practice of management and technology consulting firm West Monroe Partners. Contact him at jprimeau@westmonroepartners.com.

A PROPERLY DEFINED ROADMAP ENCOMPASSES ALL FACETS OF THE BUSINESS.

well-defined technology roadmap to stay competitive. It's a rapidly changing world, and companies need the tools to be able to react quickly. Gone are the days when decisions could be made in days or weeks solely using spreadsheets.

Execution systems are typically at the heart of a distribution center, but a properly defined roadmap encompasses all facets of the business. Investing in systems to increase overall visibility and facilitate collaboration within your organization and between your suppliers and customers is key.

From a planning perspective, distributed order management systems play an important role in determining where the inventory should be allocated. They help companies react quickly to sales volumes across their networks and optimally determine stock levels across distribution centers, fulfillment centers and stores.

Although execution systems have been around for many years and are used widely, they need to be combined with optimal material handling equipment and picking systems for companies to remain flexible, especially in highly seasonal environments.

INTEGRATE YOUR SUPPLY CHAIN

Lead logistics providers make it easy to onboard suppliers and customers through electronic data interchange. They don't deal with packing slips and paper invoices to reconcile receipts; they onboard suppliers so that they can have quick access to advanced shipment notices in order to accelerate the receipt of goods and reduce processing times. This also provides them with valuable information about the amount of space required to store incoming shipments.

Companies that go beyond transactional integration, such as ASN and payment processing, by enabling collaborative demand planning and forecasting, benefit from reduced stockouts and optimal inventory levels. Lead logistics providers also understand the value and benefits associated with having good product data. By collaborating with suppliers to maintain accurate product information, such as packaging quantities and associated bar codes, they can order standard quantities so product identification and receipt are conducted rapidly and efficiently.

For business-to-business environments, lead logistics providers maximize



THE SKILL & THE WILLSM

Skill is delivering the latest edition of a popular novel to frenzied fans.

Will is meeting a deadline everyone else considered pure fantasy.

When a publisher asked us to deliver millions of books to hundreds of stores – all on the same day – we didn't hesitate. At ABF FreightSM, we're not afraid to take on difficult or custom jobs. It's what we specialize in. We'll tailor our enterprise and LTL services to your specific shipping needs. We love the challenge. Our customers love the results. Call us with your challenge. 1-800-610-5544.

ABFSM
Freight

3PL

Nearly 400 third-party logistics providers are listed in this directory, which is managed by industry research and consulting firm Armstrong & Associates. Don't see your company and think you should be listed in the JOC's next 3PL guide? Visit www.3plogistics.com/guide_candidate.htm for consideration.

3PL SERVICES DIRECTORY



3PL

phone number / website / market area

	TOTAL LOGISTICS REVENUE (US\$ MILLIONS)	NUMBER OF WAREHOUSES	SCM SYSTEMS			TRANSPORTATION MANAGEMENT										WAREHOUSE MANAGEMENT				SPECIAL SKILLS																
			TMS (TRANSPORTATION MANAGEMENT SYSTEM)	TMS PLANNING/OPTIMIZATION	WMS (WAREHOUSE MANAGEMENT SYSTEM)	ORDER MANAGEMENT SYSTEM (OMS OR ERP)	CARRIER MANAGEMENT & CONTRACTING	DEDICATED CONTRACT CARRIAGE	FREIGHT BROKERAGE	RAIL	POOL DISTRIBUTION	MERGE IN TRANSIT	HOME DELIVERY	INSTALLATION/REMOVAL	AIR FREIGHT FORWARDING	OCEAN FREIGHT FORWARDING	NVOCC	CUSTOMS	PORT SERVICES	INVENTORY CONTROL/VENDOR MANAGEMENT	PICK/PACK	KITTING	SUB ASSEMBLY	JUST-IN-TIME (JIT) OPERATIONS	HAZARDOUS MATERIALS	TEMPERATURE CONTROLLED	ISO CERTIFIED LOCATIONS	CALL CENTERS	ORDER MANAGEMENT	REVERSE LOGISTICS MANAGEMENT	BULK COMMODITIES HANDLING	CONSULTING SERVICES	LEAD LOGISTICS PROVIDER			
24/7 EXPRESS LOGISTICS 816-778-0881 / www.247expresslogistics.com / U.S.-Regional	10	1	*	*		*	*	*	*	*	*								*	*	*		*													
A&R LOGISTICS 815-941-5200 / www.arlogistics.net / North America	76	10	*	*	*	*	*	*	*	*	*	*	*	*	*	*	*	*	*	*	*	*	*	*	*	*	*	*	*	*	*	*	*	*	*	
A.N. DERINGER 802-524-8110 / www.anderinger.com / International	127	18	*	*	*	*	*	*	*	*	*	*	*	*	*	*	*	*	*	*	*	*	*	*	*	*	*	*	*	*	*	*	*	*	*	
ACCEL LOGISTICA 52 55 5705 2788 / www.accellogistica.com.mx / North America	49	19	*	*	*	*	*	*	*	*	*	*	*	*	*	*	*	*	*	*	*	*	*	*	*	*	*	*	*	*	*	*	*	*	*	*
ACROWELL INTERNATIONAL LOGISTICS (GUANGZHOU) 86-20-8760 9292 / www.acrowell.com / International	50	2	*	*	*	*	*	*	*	*	*	*	*	*	*	*	*	*	*	*	*	*	*	*	*	*	*	*	*	*	*	*	*	*	*	*
ACTIVE AERO GROUP 734-547-7200 / www.activeondemand.com / International	121	0	*	*	*	*	*	*	*	*	*	*	*	*	*	*	*	*	*	*	*	*	*	*	*	*	*	*	*	*	*	*	*	*	*	*
ADDISON TRANSPORTATION 972-381-1209 / www.addtrans.com / U.S.	53	0	*	*	*	*	*	*	*	*	*	*	*	*	*	*	*	*	*	*	*	*	*	*	*	*	*	*	*	*	*	*	*	*	*	*
ADI LOGISTICS 732-287-1110 / www.adi-logistics.com / U.S.-Regional	8	2	*	*	*	*	*	*	*	*	*	*	*	*	*	*	*	*	*	*	*	*	*	*	*	*	*	*	*	*	*	*	*	*	*	*
ADS LOGISTICS 800-332-0920 / www.adslogistics.com / North America	102	5	*	*	*	*	*	*	*	*	*	*	*	*	*	*	*	*	*	*	*	*	*	*	*	*	*	*	*	*	*	*	*	*	*	*
ADVANCED DISTRIBUTION SYSTEMS 201-767-7350 / www.ads-oussource.com / U.S.-Regional	40	6	*	*	*	*	*	*	*	*	*	*	*	*	*	*	*	*	*	*	*	*	*	*	*	*	*	*	*	*	*	*	*	*	*	*
AEROSPACE PRODUCTS INTERNATIONAL 901-365-3470 / www.apeworldwide.com / International	113	5	*	*	*	*	*	*	*	*	*	*	*	*	*	*	*	*	*	*	*	*	*	*	*	*	*	*	*	*	*	*	*	*	*	*
AFN 866-766-8348 / www.loadafn.com / North America	175	0	*	*	*	*	*	*	*	*	*	*	*	*	*	*	*	*	*	*	*	*	*	*	*	*	*	*	*	*	*	*	*	*	*	*
AGILITY PUBLIC WAREHOUSING 965 1809 222 / www.agilitylogistics.com / Global	4,452	200	*	*	*	*	*	*	*	*	*	*	*	*	*	*	*	*	*	*	*	*	*	*	*	*	*	*	*	*	*	*	*	*	*	*
AIM INTEGRATED LOGISTICS 330-759-0438 / www.aimntls.com / North America	65	2	*	*	*	*	*	*	*	*	*	*	*	*	*	*	*	*	*	*	*	*	*	*	*	*	*	*	*	*	*	*	*	*	*	*
AIMAR (502) 2269-8200 / www.aimargroup.com / Central America	15	5	*	*	*	*	*	*	*	*	*	*	*	*	*	*	*	*	*	*	*	*	*	*	*	*	*	*	*	*	*	*	*	*	*	*
AIMI LOGISTICA 506-2239-8181 / www.aimi.cr / International	8	0	*	*	*	*	*	*	*	*	*	*	*	*	*	*	*	*	*	*	*	*	*	*	*	*	*	*	*	*	*	*	*	*	*	*
AIR-CITY 852-2757 8011 / www.aircity.com / International	150	0	*	*	*	*	*	*	*	*	*	*	*	*	*	*	*	*	*	*	*	*	*	*	*	*	*	*	*	*	*	*	*	*	*	*
AIRNET CARGO CHARTER SERVICES 614-409-4900 / www.airnet.com / North America	60	0	*	*	*	*	*	*	*	*	*	*	*	*	*	*	*	*	*	*	*	*	*	*	*	*	*	*	*	*	*	*	*	*	*	*
AIT WORLDWIDE LOGISTICS 800-669-4AIT (4248) / www.aitworldwide.com / International	350	32	*	*	*	*	*	*	*	*	*	*	*	*	*	*	*	*	*	*	*	*	*	*	*	*	*	*	*	*	*	*	*	*	*	*
ALLEN LUND 800-777-6142 / www.allenlund.com / North America	450	0	*	*	*	*	*	*	*	*	*	*	*	*	*	*	*	*	*	*	*	*	*	*	*	*	*	*	*	*	*	*	*	*	*	*
ALL-LINKS LOGISTICS GROUP 86-512-66355118 / www.all-links.com.cn / China	24	2	*	*	*	*	*	*	*	*	*	*	*	*	*	*	*	*	*	*	*	*	*	*	*	*	*	*	*	*	*	*	*	*	*	*

3PL SERVICES DIRECTORY



3PL

phone number / website / market area

		SCM SYSTEMS		TRANSPORTATION MANAGEMENT										WAREHOUSE MANAGEMENT					SPECIAL SKILLS																	
		TOTAL LOGISTICS REVENUE (US\$ MILLIONS)	NUMBER OF WAREHOUSES	TMS (TRANSPORTATION MANAGEMENT SYSTEM)	TMS PLANNING/OPTIMIZATION	WMS (WAREHOUSE MANAGEMENT SYSTEM)	ORDER MANAGEMENT SYSTEM (OMS OR ERP)	CARRIER MANAGEMENT & CONTRACTING	DEDICATED CONTRACT CARRIAGE	FREIGHT BROKERAGE	RAIL	POOL DISTRIBUTION	MERGE IN TRANSIT	HOME DELIVERY	INSTALLATION/REMOVAL	AIR FREIGHT FORWARDING	OCEAN FREIGHT FORWARDING	NVOCC	CUSTOMS	PORT SERVICES	INVENTORY CONTROL/VENDOR MANAGEMENT	PICK/PACK	KITTING	SUB ASSEMBLY	JUST-IN-TIME (JIT) OPERATIONS	HAZARDOUS MATERIALS	TEMPERATURE CONTROLLED	ISO CERTIFIED LOCATIONS	CALL CENTERS	ORDER MANAGEMENT	REVERSE LOGISTICS MANAGEMENT	BULK COMMODITIES HANDLING	CONSULTING SERVICES	LEAD LOGISTICS PROVIDER		
ALMACENADORA MERCADER 52 (33) 3668-0700 / www.almer.com.mx / Mexico	21	38	*	*	*	*	*	*	*	*	*	*	*	*	*	*	*	*	*	*	*	*	*	*	*	*	*	*	*	*	*	*	*	*	*	*
ALMACENADORA 506-2260-6117 / www.almacenadoracostarica.com / Central America	5	4	*	*	*	*	*	*	*	*	*	*	*	*	*	*	*	*	*	*	*	*	*	*	*	*	*	*	*	*	*	*	*	*	*	*
ALMAVIVA 57 (1) 353-5800 / www.almaviva.com.co / South America	48	28	*	*	*	*	*	*	*	*	*	*	*	*	*	*	*	*	*	*	*	*	*	*	*	*	*	*	*	*	*	*	*	*	*	*
ALPHA DISTRIBUTION SOLUTIONS 570-385-8420 Ext. 241 / www.alphadistsol.com / U.S.-Regional	12	4	*	*	*	*	*	*	*	*	*	*	*	*	*	*	*	*	*	*	*	*	*	*	*	*	*	*	*	*	*	*	*	*	*	*
ALPOPULAR (571) 488 0088 / www.alpopular.com.co / South America	14	7	*	*	*	*	*	*	*	*	*	*	*	*	*	*	*	*	*	*	*	*	*	*	*	*	*	*	*	*	*	*	*	*	*	*
AMÉRICA LATINA LOGÍSTICA 55 41 2141-7555 / www.all-logistica.com / Brazil	250	12	*	*	*	*	*	*	*	*	*	*	*	*	*	*	*	*	*	*	*	*	*	*	*	*	*	*	*	*	*	*	*	*	*	*
AMERICAN GLOBAL LOGISTICS 678-436-5551 / www.americangloballogistics.com / International	198	0	*	*	*	*	*	*	*	*	*	*	*	*	*	*	*	*	*	*	*	*	*	*	*	*	*	*	*	*	*	*	*	*	*	*
AMERICOLD 678-441-1400 / www.americold.com / International	1,696	177	*	*	*	*	*	*	*	*	*	*	*	*	*	*	*	*	*	*	*	*	*	*	*	*	*	*	*	*	*	*	*	*	*	*
AMWARE LOGISTICS SERVICES 970-337-7000 / www.AmwareLogistics.com / U.S.	75	24	*	*	*	*	*	*	*	*	*	*	*	*	*	*	*	*	*	*	*	*	*	*	*	*	*	*	*	*	*	*	*	*	*	*
APL LOGISTICS (65) 6278-9000 / www.aplogistics.com / Global	1,586	229	*	*	*	*	*	*	*	*	*	*	*	*	*	*	*	*	*	*	*	*	*	*	*	*	*	*	*	*	*	*	*	*	*	*
AQUA LOGISTICS 91-22-6777 0200 / www.aqualogistics.com / International	60	3	*	*	*	*	*	*	*	*	*	*	*	*	*	*	*	*	*	*	*	*	*	*	*	*	*	*	*	*	*	*	*	*	*	*
ARAMEX 962 (6) 5358855 / www.aramex.com / International	382	14	*	*	*	*	*	*	*	*	*	*	*	*	*	*	*	*	*	*	*	*	*	*	*	*	*	*	*	*	*	*	*	*	*	*
ARCHBOLD LOGISTICS 44 01706 625 556 / www.archbold.co.uk / Europe	54	7	*	*	*	*	*	*	*	*	*	*	*	*	*	*	*	*	*	*	*	*	*	*	*	*	*	*	*	*	*	*	*	*	*	*
ARS ALTMANN 49-8442-61-353 / www.ars-altmann.de / Europe	324	18	*	*	*	*	*	*	*	*	*	*	*	*	*	*	*	*	*	*	*	*	*	*	*	*	*	*	*	*	*	*	*	*	*	*
ARVATO 49 5241 80-40600 / www.arvato.com / International	1,712	126	*	*	*	*	*	*	*	*	*	*	*	*	*	*	*	*	*	*	*	*	*	*	*	*	*	*	*	*	*	*	*	*	*	*
ASIA SHIPPING TRANSPORTES INTERNACIONAIS +55 13 2101-7758 / www.asgroup.net / International	30	0	*	*	*	*	*	*	*	*	*	*	*	*	*	*	*	*	*	*	*	*	*	*	*	*	*	*	*	*	*	*	*	*	*	*
ATLANTA BONDED WAREHOUSE 770-425-3000 / www.atlantabonded.com / U.S.-Regional	85	8	*	*	*	*	*	*	*	*	*	*	*	*	*	*	*	*	*	*	*	*	*	*	*	*	*	*	*	*	*	*	*	*	*	*
ATS LOGISTICS SERVICES, D/B/A SUREWAY TRANSPORTATION 800-338-0497 / www.ats-sureway.com / North America	176	0	*	*	*	*	*	*	*	*	*	*	*	*	*	*	*	*	*	*	*	*	*	*	*	*	*	*	*	*	*	*	*	*	*	*
AVERITT EXPRESS 800-283-7488 / www.averittpress.com / North America	326	107	*	*	*	*	*	*	*	*	*	*	*	*	*	*	*	*	*	*	*	*	*	*	*	*	*	*	*	*	*	*	*	*	*	*
BANNEKER INDUSTRIES 401-534-0027 / www.banneker.com / U.S.-Regional	10	4	*	*	*	*	*	*	*	*	*	*	*	*	*	*	*	*	*	*	*	*	*	*	*	*	*	*	*	*	*	*	*	*	*	*
BARLOWORLD LOGISTICS 27 11 445 1600 / www.barloworld-logistics.com / International	456	4	*	*	*	*	*	*	*	*	*	*	*	*	*	*	*	*	*	*	*	*	*	*	*	*	*	*	*	*	*	*	*	*	*	*
BARRETT DISTRIBUTION CENTERS 508-553-8800 / www.barrettdistribution.com / U.S.-Regional	45	14	*	*	*	*	*	*	*	*	*	*	*	*	*	*	*	*	*	*	*	*	*	*	*	*	*	*	*	*	*	*	*	*	*	*
BCUBE 39 0142 565600 / www.bcube.net / International	481	55	*	*	*	*	*	*	*	*	*	*	*	*	*	*	*	*	*	*	*	*	*	*	*	*	*	*	*	*	*	*	*	*	*	*
BDP INTERNATIONAL 215-629-8900 / www.bdpinternational.com / International	1,900	0	*	*	*	*	*	*	*	*	*	*	*	*	*	*	*	*	*	*	*	*	*	*	*	*	*	*	*	*	*	*	*	*	*	*
BEAR TRANSPORTATION SERVICES 800-527-5380 / www.beartrans.com / North America	138	0	*	*	*	*	*	*	*	*	*	*	*	*	*	*	*	*	*	*	*	*	*	*	*	*	*	*	*	*	*	*	*	*	*	*
BEIJING BAOLONG LOGISTICS 86-10-60538544 / www.bl56.com / China	80	6	*	*	*	*	*	*	*	*	*	*	*	*	*	*	*	*	*	*	*	*	*	*	*	*	*	*	*	*	*	*	*	*	*	*

3PL SERVICES DIRECTORY

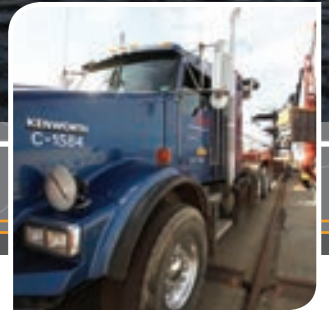


3PL

phone number / website / market area

	TOTAL LOGISTICS REVENUE (US\$ MILLIONS)	NUMBER OF WAREHOUSES	SCM SYSTEMS			TRANSPORTATION MANAGEMENT							WAREHOUSE MANAGEMENT				SPECIAL SKILLS																					
			TMS (TRANSPORTATION MANAGEMENT SYSTEM)	TMS PLANNING/OPTIMIZATION	WMS (WAREHOUSE MANAGEMENT SYSTEM)	ORDER MANAGEMENT SYSTEM (OMS OR ERP)	CARRIER MANAGEMENT & CONTRACTING	DEDICATED CONTRACT CARRIAGE	FREIGHT BROKERAGE	RAIL	POOL DISTRIBUTION	MERGE IN TRANSIT	HOME DELIVERY	INSTALLATION/REMOVAL	AIR FREIGHT FORWARDING	OCEAN FREIGHT FORWARDING	INVOC	CUSTOMS	PORT SERVICES	INVENTORY CONTROL/VENDOR MANAGEMENT	PICK/PACK	KITTING	SUB ASSEMBLY	JUST-IN-TIME (JIT) OPERATIONS	HAZARDOUS MATERIALS	TEMPERATURE CONTROLLED	ISO CERTIFIED LOCATIONS	CALL CENTERS	ORDER MANAGEMENT	REVERSE LOGISTICS MANAGEMENT	BULK COMMODITIES HANDLING	CONSULTING SERVICES	LEAD LOGISTICS PROVIDER					
BEIJING EAST EXPRESS LOGISTICS 86-10-6059 2668 / www.beel.com.cn / China	40	7	*	*	*													*	*	*	*					*	*	*	*	*	*	*	*	*				
BEIJING HARMONY SHIPPING & FORWARDING AGENT 86-10-64568866 / www.harmony.com.cn / China	240	2	*		*					*			*	*	*	*	*		*	*	*	*		*			*	*	*	*	*	*	*	*				
BEIJING WUHUAN SHUNTONG LOGISTICS CENTER 86-10-8796 3548 / www.whstwl.com / China	5	2	*		*					*			*	*	*	*	*		*	*	*	*		*			*	*	*	*	*	*	*	*	*			
BEL INTERNATIONAL LOGISTICS 852-27960118 / www.bel-intl.com / China	300	3	*		*								*	*	*	*	*		*	*	*	*		*			*	*	*	*	*	*	*	*	*			
BELFOR LOGISTICS 32-3-231-29-35 / www.belforlogistics.com / International	11	0	*		*								*	*	*	*	*		*	*	*	*		*			*	*	*	*	*	*	*	*	*			
BENDER GROUP 800-621-9402 / www.bendergroup.com / North America	18	7	*		*					*			*	*	*	*	*		*	*	*	*		*			*	*	*	*	*	*	*	*	*	*		
BIBBY DISTRIBUTION 44 (0)151 708 8000 / www.bibbydist.co.uk / United Kingdom	370	20	*	*	*	*	*	*	*	*	*	*	*	*	*	*	*		*	*	*	*		*			*	*	*	*	*	*	*	*	*	*		
BINOTTO 55 11 2148-5102 / www.binotto.com.br / South America	30	12	*	*	*	*	*	*	*	*	*	*	*	*	*	*	*		*	*	*	*		*			*	*	*	*	*	*	*	*	*	*		
BLACK HORSE CARRIERS 630-690-8900 / www.blackhorsecarriers.com / U.S.	200	6	*	*	*	*	*	*	*	*	*	*	*	*	*	*	*		*	*	*	*		*			*	*	*	*	*	*	*	*	*	*		
BLG LOGISTICS GROUP 49 421 398 3475 / www.blg.de / International	1,566	50	*		*								*	*	*	*	*		*	*	*	*		*			*	*	*	*	*	*	*	*	*	*		
BLUE EXPRESS INTERNATIONAL (562) 290-4000 / www.bluex.cl / South America	61	1	*		*								*	*	*	*	*		*	*	*	*		*			*	*	*	*	*	*	*	*	*	*		
BNSF LOGISTICS 800-275-8521 / www.bnsflogistics.com / International	508	4	*	*	*	*	*	*	*	*	*	*	*	*	*	*	*		*	*	*	*		*			*	*	*	*	*	*	*	*	*	*	*	
BOMI DE MEXICO 52 722 249 2002 / www.bomimexico.com / International	16	2	*	*	*	*	*	*	*	*	*	*	*	*	*	*	*		*	*	*	*		*			*	*	*	*	*	*	*	*	*	*	*	
BONDED LOGISTICS 704-597-9638 / www.bondedlogistics.com / North America	28	10	*		*					*			*	*	*	*	*		*	*	*	*		*			*	*	*	*	*	*	*	*	*	*	*	
BRIGHTSTAR 305-421-6000 / www.brightstarcorp.com / Global	920	42	*		*					*			*	*	*	*	*		*	*	*	*		*			*	*	*	*	*	*	*	*	*	*	*	
BRILLIANT INTERNATIONAL LOGISTICS 86-574-8389 9863 / www.nb-brilliant.com / China	50	2	*		*								*	*	*	*	*		*	*	*	*		*			*	*	*	*	*	*	*	*	*	*	*	
BURRIS LOGISTICS 800-805-8135 / www.burrislogistics.com / U.S.-Regional	3,119	14	*	*	*	*	*	*	*	*	*	*	*	*	*	*	*		*	*	*	*		*			*	*	*	*	*	*	*	*	*	*	*	
C&D LOGISTICS GROUP 86 592 2263777 / www.cndlogistics.com / China	470	97	*		*					*			*	*	*	*	*		*	*	*	*		*			*	*	*	*	*	*	*	*	*	*	*	
C.H. ROBINSON WORLDWIDE 952-683-3800 / www.chrobinson.com / Global	12,752	0	*	*	*	*	*	*	*	*	*	*	*	*	*	*	*		*	*	*	*		*			*	*	*	*	*	*	*	*	*	*	*	
CAPACITY 732-745-7770 Ext. 101 / www.capacityllc.com / U.S.-Regional	15	4	*		*					*			*	*	*	*	*		*	*	*	*		*			*	*	*	*	*	*	*	*	*	*	*	
CARDINAL LOGISTICS MANAGEMENT 704-786-6125 / www.cardlog.com / North America	1,361	29	*		*					*			*	*	*	*	*		*	*	*	*		*			*	*	*	*	*	*	*	*	*	*	*	
CARGO EXPRESS INTERNATIONAL (H.K.) 852 2763 6667 / www.cargohk.com / China	7	1	*		*					*			*	*	*	*	*		*	*	*	*		*			*	*	*	*	*	*	*	*	*	*	*	
CARGO LOGISTICS (XIAMEN) 86-592-5608 356 / www.cargo-logistics.com / China	35	1	*		*					*			*	*	*	*	*		*	*	*	*		*			*	*	*	*	*	*	*	*	*	*	*	
CARGO SERVICES FAR EAST (852) 2481 8308 / www.cargofoe.com / International	335	3	*		*					*			*	*	*	*	*		*	*	*	*		*			*	*	*	*	*	*	*	*	*	*	*	*
CELSUR LOGÍSTICA 54 (11) 4131-3400 / www.celsur.com.ar / South America	72	5	*	*	*	*	*	*	*	*	*	*	*	*	*	*	*		*	*	*	*		*			*	*	*	*	*	*	*	*	*	*	*	*
CEVA LOGISTICS 31 23 568 33 00 / www.cevalogistics.com / Global	8,517	615	*	*	*	*	*	*	*	*	*	*	*	*	*	*	*		*	*	*	*		*			*	*	*	*	*	*	*	*	*	*	*	*
CHAMPAGNE LOGISTICS 480-736-8987 / www.champagnelogistics.com / North America	73	5	*		*					*			*	*	*	*	*		*	*	*	*		*			*	*	*	*	*	*	*	*	*	*	*	
CHAMPION LOGISTICS GROUP 708-562-4200 / www.champlog.com / International	71	7	*		*					*			*	*	*	*	*		*	*	*	*		*			*	*	*	*	*	*	*	*	*	*	*	

Moving you - and the industry - forward.



Resourceful. Reliable. Responsive.

TOTE is committed to meeting the shipping needs of today while preparing for tomorrow. Whether adding companies like Carlisle Transportation Systems to our vast network of resources, or building the world's first natural gas powered containerships, our focus is on you.

TOTE **proudly leads the industry in environmental responsibility and customer satisfaction** by delivering supply chain solutions you and your customers can count on.



ALWAYS MOVING FORWARD www.toteinc.com

 TOTE Maritime



 TOTE Services

Leading Edge Ship Management Solutions.

Carlisle
TRANSPORTATION

3PL SERVICES DIRECTORY



3PL

phone number / website / market area

	TOTAL LOGISTICS REVENUE (US\$ MILLIONS)	NUMBER OF WAREHOUSES	SCM SYSTEMS										TRANSPORTATION MANAGEMENT							WAREHOUSE MANAGEMENT				SPECIAL SKILLS											
			TMS (TRANSPORTATION MANAGEMENT SYSTEM)	TMS PLANNING/OPTIMIZATION	WMS (WAREHOUSE MANAGEMENT SYSTEM)	ORDER MANAGEMENT SYSTEM (OMS OR ERP)	CARRIER MANAGEMENT & CONTRACTING	DEDICATED CONTRACT CARRIAGE	FREIGHT BROKERAGE	RAIL	POOL DISTRIBUTION	MERGE IN TRANSIT	HOME DELIVERY	INSTALLATION/REMOVAL	AIR FREIGHT FORWARDING	OCEAN FREIGHT FORWARDING	INVOC	CUSTOMS	PORT SERVICES	INVENTORY CONTROL/VENDOR MANAGEMENT	PICK/PACK	KITTING	SUB ASSEMBLY	JUST-IN-TIME (JIT) OPERATIONS	HAZARDOUS MATERIALS	TEMPERATURE CONTROLLED	ISO CERTIFIED LOCATIONS	CALL CENTERS	ORDER MANAGEMENT	REVERSE LOGISTICS MANAGEMENT	BULK COMMODITIES HANDLING	CONSULTING SERVICES	LEAD LOGISTICS PROVIDER		
CHENGDU ANT LOGISTICS 86-28-6829 5081 / www.chinaant.com / China	50	1	*	*															*	*							*				*				
CHINA RESOURCES LOGISTICS (GROUP) 852-2374-6688 / www.crlogistics.com / Hong Kong	1,200	11	*	*	*	*						*	*	*	*	*	*	*	*	*	*	*	*	*	*	*	*	*	*	*	*	*			
CHINA SHIPPING LINES (SHENZHEN) 86-755-33071259 / http://www.eil-china.com / Asia Pacific	20	1	*	*	*	*						*	*						*	*							*				*				
CHINATRANS INTERNATIONAL 86 755 8213 8988 / www.cntrans.com / International	480	8	*	*	*	*	*	*	*	*	*	*	*	*	*	*	*	*	*	*	*	*	*	*	*	*	*	*	*	*	*	*	*		
CHOICE LOGISTICS 917-344-4000 Ext. 4107 / www.choicelogistics.com / Global	87	400	*	*	*	*									*			*	*	*						*	*	*	*	*	*	*	*		
CHONGQING QUALITY INTERNATIONAL LOGISTICS 86-23-6566 6178 / www.qualitylogistics.com.cn / China	17	2	*	*					*							*		*	*	*		*				*	*					*			
CHONGQING XUEFENG REFRIGERATES LOGISTICS 86-23-61885176 / www.cqxuefeng.com / China	15	3	*	*														*	*	*		*				*	*					*			
CITY OCEAN LOGISTICS 86-755-33339933 / www.cityocean.com / International	120	0	*	*	*	*	*	*	*	*	*	*	*	*	*	*	*	*	*	*	*	*	*	*	*	*	*	*	*	*	*	*	*	*	
CJ KOREA EXPRESS 81-2-3782-0114 / www.cjkoreaexpress.co.kr / International	2,592	189	*	*	*	*	*	*	*	*	*	*	*	*	*	*	*	*	*	*	*	*	*	*	*	*	*	*	*	*	*	*	*	*	
COLUMBIAN LOGISTICS NETWORK 616-514-6000 / www.columbian.us / U.S.-Regional	44	8	*	*	*	*	*	*	*	*	*	*	*	*	*	*	*	*	*	*	*	*	*	*	*	*	*	*	*	*	*	*	*	*	
COMMAND TRANSPORTATION 847-213-2293 / www.commandtransportation.com / North America	260	0	*	*			*	*	*	*	*	*	*	*	*	*	*	*	*	*	*	*	*	*	*	*	*	*	*	*	*	*	*	*	
COMMERCIAL TRAFFIC, A/K/A CT LOGISTICS 216-267-2000 / www.ctlogistics.com / International	23	1	*	*			*	*	*	*	*	*	*	*	*	*	*	*	*	*	*	*	*	*	*	*	*	*	*	*	*	*	*	*	
COMMERCIAL WAREHOUSE & CARTAGE 800-397-7825 / www.cwclogon.com / North America	38	8			*	*												*	*	*	*	*	*	*	*	*	*	*	*	*	*	*	*	*	
COMMERCIAL WAREHOUSING 863-967-6801 / www.commercial-warehousing.com / U.S.-Regional	350	15	*	*	*	*	*	*	*	*	*	*	*	*	*	*	*	*	*	*	*	*	*	*	*	*	*	*	*	*	*	*	*	*	*
COMPREHENSIVE LOGISTICS 800-734-0372 / www.complog.com / North America	110	9	*	*	*	*	*	*	*	*	*	*	*	*	*	*	*	*	*	*	*	*	*	*	*	*	*	*	*	*	*	*	*	*	*
CON-WAY MULTIMODAL 866-592-3055 / www.con-way.com/en/other_modes / North America	202	0	*	*			*	*	*	*	*	*	*	*	*	*	*	*	*	*	*	*	*	*	*	*	*	*	*	*	*	*	*	*	*
CORNERSTONE SYSTEMS 901-842-0660 / www.cornerstone-systems.com / North America	226	0	*	*	*	*	*	*	*	*	*	*	*	*	*	*	*	*	*	*	*	*	*	*	*	*	*	*	*	*	*	*	*	*	*
COYOTE LOGISTICS 877-6-COYOTE / www.coyote.com / North America	2,000	0	*	*	*	*	*	*	*	*	*	*	*	*	*	*	*	*	*	*	*	*	*	*	*	*	*	*	*	*	*	*	*	*	*
CRANE WORLDWIDE LOGISTICS 281-443-2777 / www.craneww.com / International	574	39	*	*	*	*	*	*	*	*	*	*	*	*	*	*	*	*	*	*	*	*	*	*	*	*	*	*	*	*	*	*	*	*	*
CROWLEY LOGISTICS 800-CROWLEY / www.crowley.com/What-We-Do/Shipping-and-Logistics / International	155	15	*	*	*	*	*	*	*	*	*	*	*	*	*	*	*	*	*	*	*	*	*	*	*	*	*	*	*	*	*	*	*	*	*
CRST LOGISTICS 800-767-4521 / www.crstlogistics.com / North America	144	0	*	*	*	*	*	*	*	*	*	*	*	*	*	*	*	*	*	*	*	*	*	*	*	*	*	*	*	*	*	*	*	*	*
CTC INTERNATIONAL LOGISTICS 86-592-565835 / www.ctcsea.com / China	160	2	*	*	*	*	*	*	*	*	*	*	*	*	*	*	*	*	*	*	*	*	*	*	*	*	*	*	*	*	*	*	*	*	*
CTSI-GLOBAL 901-766-1500 / www.ctsi-global.com / International	25	0	*	*	*	*	*	*	*	*	*	*	*	*	*	*	*	*	*	*	*	*	*	*	*	*	*	*	*	*	*	*	*	*	*
CWT 65 6262 6888 / www.cwtlimited.com / International	645	19	*	*	*	*	*	*	*	*	*	*	*	*	*	*	*	*	*	*	*	*	*	*	*	*	*	*	*	*	*	*	*	*	*
D.W. MORGAN 925-460-2700 / www.dwmorgan.com / International	130	15	*	*	*	*	*	*	*	*	*	*	*	*	*	*	*	*	*	*	*	*	*	*	*	*	*	*	*	*	*	*	*	*	*
D+S DISTRIBUTION 800-752-5993 / www.dsdistribution.com / U.S.-Regional	20	19	*	*	*	*	*	*	*	*	*	*	*	*	*	*	*	*	*	*	*	*	*	*	*	*	*	*	*	*	*	*	*	*	*

3PL SERVICES DIRECTORY



3PL

phone number / website / market area

	TOTAL LOGISTICS REVENUE (US\$ MILLIONS)	NUMBER OF WAREHOUSES	SCM SYSTEMS			TRANSPORTATION MANAGEMENT							WAREHOUSE MANAGEMENT				SPECIAL SKILLS																						
			TMS (TRANSPORTATION MANAGEMENT SYSTEM)	TMS PLANNING/OPTIMIZATION	WMS (WAREHOUSE MANAGEMENT SYSTEM)	ORDER MANAGEMENT SYSTEM (OMS OR ERP)	CARRIER MANAGEMENT & CONTRACTING	DEDICATED CONTRACT CARRIAGE	FREIGHT BROKERAGE	RAIL	POOL DISTRIBUTION	MERGE IN TRANSIT	HOME DELIVERY	INSTALLATION/REMOVAL	AIR FREIGHT FORWARDING	OCEAN FREIGHT FORWARDING	INVOC	CUSTOMS	PORT SERVICES	INVENTORY CONTROL/VENDOR MANAGEMENT	PICK/PACK	KITTING	SUB ASSEMBLY	JUST-IN-TIME (JIT) OPERATIONS	HAZARDOUS MATERIALS	TEMPERATURE CONTROLLED	ISO CERTIFIED LOCATIONS	CALL CENTERS	ORDER MANAGEMENT	REVERSE LOGISTICS MANAGEMENT	BULK COMMODITIES HANDLING	CONSULTING SERVICES	LEAD LOGISTICS PROVIDER						
DACHSER 49 831 5916-0 / www.dachser.com / International	6,627	90	*	*	*	*	*	*	*	*	*	*	*	*	*	*	*	*	*	*	*	*	*	*	*	*	*	*	*	*	*	*	*	*	*	*	*	*	
DALIAN KANGNING LOGISTICS 86-411-8887 0099 / www.klogistics.cn / China	60	0	*			*																																	
DAMCO INTERNATIONAL 31 (0)70 302 3800 / www.damco.com / International	3,212	167	*	*	*	*	*	*	*	*	*	*	*	*	*	*	*	*	*	*	*	*	*	*	*	*	*	*	*	*	*	*	*	*	*	*	*	*	
DB SCHENKER LOGISTICS 49 201 8781-0 / www.dbschenker.com / Global	19,732	570	*	*	*	*	*	*	*	*	*	*	*	*	*	*	*	*	*	*	*	*	*	*	*	*	*	*	*	*	*	*	*	*	*	*	*	*	
DEPENDABLE GLOBAL EXPRESS 800-488-4888 / www.dgxshipping.com / International	30	6	*	*	*	*	*	*	*	*	*	*	*	*	*	*	*	*	*	*	*	*	*	*	*	*	*	*	*	*	*	*	*	*	*	*	*	*	
DEPENDABLE HAWAIIAN EXPRESS 800-488-4888 / www.dhx.com / U.S. & International	245	8	*	*	*	*	*	*	*	*	*	*	*	*	*	*	*	*	*	*	*	*	*	*	*	*	*	*	*	*	*	*	*	*	*	*	*	*	
DE WELL GROUP 86-021-61031877 / www.de-well.com / International	300	2	*	*	*	*	*	*	*	*	*	*	*	*	*	*	*	*	*	*	*	*	*	*	*	*	*	*	*	*	*	*	*	*	*	*	*	*	
DERBY SUPPLY CHAIN SOLUTIONS 502-451-7373 / www.derbyllc.com / North America	100	10		*																																			
DEUFOL SE 49 6122-50-00 / www.deufol.com / International	424	60	*	*	*	*	*	*	*	*	*	*	*	*	*	*	*	*	*	*	*	*	*	*	*	*	*	*	*	*	*	*	*	*	*	*	*	*	
DFDS LOGISTICS 45 3342 3342 / www.dfdslogistics.com / Europe	745	15		*		*																																	
DHL SUPPLY CHAIN & GLOBAL FORWARDING 49 228 18272021 / www.dhl.com / Global	31,432	2,400	*	*	*	*	*	*	*	*	*	*	*	*	*	*	*	*	*	*	*	*	*	*	*	*	*	*	*	*	*	*	*	*	*	*	*	*	
DIMERCO EXPRESS GROUP 886-2-2796-3660 / www.dimerco.com / International	477	14	*	*	*	*	*	*	*	*	*	*	*	*	*	*	*	*	*	*	*	*	*	*	*	*	*	*	*	*	*	*	*	*	*	*	*	*	*
DSC LOGISTICS 847-390-6800 / www.dsclogistics.com / U.S.	340	49	*	*	*	*	*	*	*	*	*	*	*	*	*	*	*	*	*	*	*	*	*	*	*	*	*	*	*	*	*	*	*	*	*	*	*	*	*
DSN CHEMICAL TRANSPORTATION 905-607-6775 / www.chemicaltransportation.com / North America	15	0	*			*																																	
DSV 45 43 20 30 40 / www.dsv.com / International	8,140	250	*	*	*	*	*	*	*	*	*	*	*	*	*	*	*	*	*	*	*	*	*	*	*	*	*	*	*	*	*	*	*	*	*	*	*	*	*
E*FILL AMERICA 404-510-6337 / www.efillamerica.com / U.S.-Regional	26	175	*	*	*	*	*	*	*	*	*	*	*	*	*	*	*	*	*	*	*	*	*	*	*	*	*	*	*	*	*	*	*	*	*	*	*	*	*
EAGLE ALLIANCE INTERNATIONAL LOGISTICS BEIJING 86-10-59767262 / www.eaifreight.com / China	3	0	*			*							*	*	*	*	*	*	*	*	*	*	*	*	*	*	*	*	*	*	*	*	*	*	*	*	*	*	*
ECHO GLOBAL LOGISTICS 800-354-7993 / www.echo.com / International	884	0	*	*	*	*	*	*	*	*	*	*	*	*	*	*	*	*	*	*	*	*	*	*	*	*	*	*	*	*	*	*	*	*	*	*	*	*	*
EMERALD FREIGHT EXPRESS 353 1 8427 666 / www.emerald-freight.com / International	1	2				*																																	
EMONS SPEDITION 49 2 21-9 83 51-0 / www.emons.de / International	469	19	*	*	*	*	*	*	*	*	*	*	*	*	*	*	*	*	*	*	*	*	*	*	*	*	*	*	*	*	*	*	*	*	*	*	*	*	*
ENGLAND LOGISTICS 801-656-4718 / www.Englandlogistics.com / North America	798	2	*	*	*	*	*	*	*	*	*	*	*	*	*	*	*	*	*	*	*	*	*	*	*	*	*	*	*	*	*	*	*	*	*	*	*	*	*
EPES LOGISTICS SERVICES 336-665-1553 / www.epeslogistics.com / North America	56	1	*	*	*	*	*	*	*	*	*	*	*	*	*	*	*	*	*	*	*	*	*	*	*	*	*	*	*	*	*	*	*	*	*	*	*	*	*
E-ROAD LOGISTICS 86-755-29601111 / www.e-henglu.com / China	80	4	*	*	*	*	*	*	*	*	*	*	*	*	*	*	*	*	*	*	*	*	*	*	*	*	*	*	*	*	*	*	*	*	*	*	*	*	*
ESA LOGISTICS (HK) 852-2838-9096 / www.esa-ship.com / China	40	1	*	*	*	*	*	*	*	*	*	*	*	*	*	*	*	*	*	*	*	*	*	*	*	*	*	*	*	*	*	*	*	*	*	*	*	*	*
ESTES FORWARDING WORLDWIDE 855-433-9669 / www.efwnow.com / International	104	4	*	*	*	*	*	*	*	*	*	*	*	*	*	*	*	*	*	*	*	*	*	*	*	*	*	*	*	*	*	*	*	*	*	*	*	*	*
EVANS DISTRIBUTION SYSTEMS 313-388-3200 / www.evansdist.com / U.S.-Regional	50	12	*	*	*	*	*	*	*	*	*	*	*	*	*	*	*	*	*	*	*	*	*	*	*	*	*	*	*	*	*	*	*	*	*	*	*	*	*
EVERLINK INTERNATIONAL LOGISTICS 86-512-57358868 / www.everlinkintl.com / China	70	2		*		*							*	*	*	*	*	*	*	*	*	*	*	*	*	*	*	*	*	*	*	*	*	*	*	*	*	*	*

3PL SERVICES DIRECTORY



3PL

phone number / website / market area

		SCM SYSTEMS	TRANSPORTATION MANAGEMENT				WAREHOUSE MANAGEMENT				SPECIAL SKILLS																							
TOTAL LOGISTICS REVENUE (US\$ MILLIONS)	NUMBER OF WAREHOUSES	TMS (TRANSPORTATION MANAGEMENT SYSTEM)	TMS PLANNING/OPTIMIZATION	WMS (WAREHOUSE MANAGEMENT SYSTEM)	ORDER MANAGEMENT SYSTEM (OMS OR ERP)	CARRIER MANAGEMENT & CONTRACTING	DEDICATED CONTRACT CARRIAGE	FREIGHT BROKERAGE	RAIL	POOL DISTRIBUTION	MERGE IN TRANSIT	HOME DELIVERY	INSTALLATION/REMOVAL	AIR FREIGHT FORWARDING	OCEAN FREIGHT FORWARDING	INVOC	CUSTOMS	PORT SERVICES	INVENTORY CONTROL/VENDOR MANAGEMENT	PICK/PACK	KITTING	SUB ASSEMBLY	JUST-IN-TIME (JIT) OPERATIONS	HAZARDOUS MATERIALS	TEMPERATURE CONTROLLED	ISO CERTIFIED LOCATIONS	CALL CENTERS	ORDER MANAGEMENT	REVERSE LOGISTICS MANAGEMENT	BULK COMMODITIES HANDLING	CONSULTING SERVICES	LEAD LOGISTICS PROVIDER		
EWALS CARGO CARE 0031-77-3202202 / www.ewals.com / International	705	15	*	*	*	*	*	*	*	*	*	*	*	*	*	*	*	*	*	*	*	*	*	*	*	*	*	*	*	*	*	*	*	*
EXEL (DHL SUPPLY CHAIN - AMERICAS) 800-272-1052 / www.exel.com / Americas	4,600	534	*	*	*	*	*	*	*	*	*	*	*	*	*	*	*	*	*	*	*	*	*	*	*	*	*	*	*	*	*	*	*	*
EXPEDITORS 206-674-3400 / www.expeditors.com / Global	6,080	257	*	*	*	*	*	*	*	*	*	*	*	*	*	*	*	*	*	*	*	*	*	*	*	*	*	*	*	*	*	*	*	*
FAC FOOD LOGISTICS 800-285-7004 / www.faclogistics.com / North America	100	0	*							*											*													
FANS TRANS INTERNATIONAL 852-2320-2880 / www.fanstrans.com / China/Hong Kong	30	0	*	*	*	*	*	*						*	*	*	*	*	*	*	*	*	*	*	*	*	*							*
FATTON 33 04 72 15 63 63 / www.fatton.com / International	125	5	*	*	*	*	*	*	*	*	*	*	*	*	*	*	*	*	*	*	*	*	*	*	*	*	*	*	*	*	*	*	*	*
FEDEX TRADE NETWORKS AND FEDEX SUPPLYCHAIN 901-684-4800 / www.fedex.com / Global	1,387	40	*	*	*	*	*	*	*	*	*	*	*	*	*	*	*	*	*	*	*	*	*	*	*	*	*	*	*	*	*	*	*	*
FIDELITONE 847.487.3300 / www.fidelitone.com / North America	480	35	*	*	*	*	*	*	*	*	*	*	*	*	*	*	*	*	*	*	*	*	*	*	*	*	*	*	*	*	*	*	*	*
FIEGE LOGISTIK STIFTUNG 49 (2571) 999-0 / www.fiege.com / International	2,090	210	*	*	*	*	*	*	*	*	*	*	*	*	*	*	*	*	*	*	*	*	*	*	*	*	*	*	*	*	*	*	*	*
FREEMPORT LOGISTICS 602-233-3891 / www.freemport-logistics.com / U.S.-Regional	11	2	*	*	*	*	*	*	*	*	*	*	*	*	*	*	*	*	*	*	*	*	*	*	*	*	*	*	*	*	*	*	*	*
FREIGHTQUOTE.COM 800-323-5441 / www.freightquote.com / North America	590	1	*	*	*	*	*	*	*	*	*	*	*	*	*	*	*	*	*	*	*	*	*	*	*	*	*	*	*	*	*	*	*	*
G&D INTEGRATED 800-451-6680 / www.gdintegrated.com / U.S.-Regional	175	11	*	*	*	*	*	*	*	*	*	*	*	*	*	*	*	*	*	*	*	*	*	*	*	*	*	*	*	*	*	*	*	*
GEFCO 33 (0)1 49 05 21 21 / www.gefco.net / International	5,300	40	*	*	*	*	*	*	*	*	*	*	*	*	*	*	*	*	*	*	*	*	*	*	*	*	*	*	*	*	*	*	*	*
GENCO 800-677-3110 / www.genco.com / North America	1,509	140	*	*	*	*	*	*	*	*	*	*	*	*	*	*	*	*	*	*	*	*	*	*	*	*	*	*	*	*	*	*	*	*
GEODIS 33-1-56-76-26-00 / www.geodis.com / International	6,108	600	*	*	*	*	*	*	*	*	*	*	*	*	*	*	*	*	*	*	*	*	*	*	*	*	*	*	*	*	*	*	*	*
GIRAG 57 (1) 414-7010 / www.girag.com / South America	30	6	*	*	*	*	*	*	*	*	*	*	*	*	*	*	*	*	*	*	*	*	*	*	*	*	*	*	*	*	*	*	*	*
GLOBALTRANZ ENTERPRISES 866-275-1407 / www.globaltranz.com / U.S.	271	0	*	*	*	*	*	*	*	*	*	*	*	*	*	*	*	*	*	*	*	*	*	*	*	*	*	*	*	*	*	*	*	*
GNK LOGÍSTICA 52 55 5265 9500 / www.gnkl.mx / Americas	12	3	*	*	*	*	*	*	*	*	*	*	*	*	*	*	*	*	*	*	*	*	*	*	*	*	*	*	*	*	*	*	*	*
GRUPO 3PL 58 (212) 212-1400 / www.grupo3pl.com / Latin America	80	21	*	*	*	*	*	*	*	*	*	*	*	*	*	*	*	*	*	*	*	*	*	*	*	*	*	*	*	*	*	*	*	*
GRUPO PORTEO 52-81-8625 9000 / www.porteogroup.com / Mexico	21	23	*	*	*	*	*	*	*	*	*	*	*	*	*	*	*	*	*	*	*	*	*	*	*	*	*	*	*	*	*	*	*	*
GRUPO TPC 55 71 2108-9798 / www.grupotpc.com / Brazil	150	13	*	*	*	*	*	*	*	*	*	*	*	*	*	*	*	*	*	*	*	*	*	*	*	*	*	*	*	*	*	*	*	*
GUANGDONG GOLDJET INTERNATIONAL LOGISTICS 86-20-66601833 / www.goldjet.com.cn / China	100	1	*		*	*	*	*	*	*	*	*	*	*	*	*	*	*	*	*	*	*	*	*	*	*	*	*	*	*	*	*	*	*
GUANGZHOU CITY STAR LOGISTICS 86-20-8199 6868 / www.socl.net / China	100	6	*	*	*	*	*	*	*	*	*	*	*	*	*	*	*	*	*	*	*	*	*	*	*	*	*	*	*	*	*	*	*	*
GUANGZHOU HUTCHISON LOGISTICS SERVICES 86-021-61313536 / www.hutchison-ls.com / China	29	30	*	*	*	*	*	*	*	*	*	*	*	*	*	*	*	*	*	*	*	*	*	*	*	*	*	*	*	*	*	*	*	*
HAN WAN INTERNATIONAL LOGISTICS (CHINA) 86-21-51607988 / www.hanwan.com.cn / China	120	1	*	*	*	*	*	*	*	*	*	*	*	*	*	*	*	*	*	*	*	*	*	*	*	*	*	*	*	*	*	*	*	*
HANGZHOU FURI LOGISTICS 86-571-8692 3969 / www.frllogistics.com / China	25	6	*	*	*	*	*	*	*	*	*	*	*	*	*	*	*	*	*	*	*	*	*	*	*	*	*	*	*	*	*	*	*	*
HANGZHOU HUASHANG LOGISTICS 86-571-2805 2280 / www.hzhs56.com / China	20	5	*	*	*	*	*	*	*	*	*	*	*	*	*	*	*	*	*	*	*	*	*	*	*	*	*	*	*	*	*	*	*	*
HANOVER LOGISTICS 717-630-0016 / www.hanoverlogistics.com / U.S.-Regional	15	3	*	*	*	*	*	*	*	*	*	*	*	*	*	*	*	*	*	*	*	*	*	*	*	*	*	*	*	*	*	*	*	*

3PL SERVICES DIRECTORY



3PL

phone number / website / market area

		SCM SYSTEMS	TRANSPORTATION MANAGEMENT											WAREHOUSE MANAGEMENT				SPECIAL SKILLS																		
TOTAL LOGISTICS REVENUE (US\$ MILLIONS)	NUMBER OF WAREHOUSES	TMS (TRANSPORTATION MANAGEMENT SYSTEM)	TMS PLANNING/OPTIMIZATION	WMS (WAREHOUSE MANAGEMENT SYSTEM)	ORDER MANAGEMENT SYSTEM (OMS OR ERP)	CARRIER MANAGEMENT & CONTRACTING	DEDICATED CONTRACT CARRIAGE	FREIGHT BROKERAGE	RAIL	POOL DISTRIBUTION	MERGE IN TRANSIT	HOME DELIVERY	INSTALLATION/REMOVAL	AIR FREIGHT FORWARDING	OCEAN FREIGHT FORWARDING	NVOCC	CUSTOMS	PORT SERVICES	INVENTORY CONTROL/VENDOR MANAGEMENT	PICK/PACK	KITTING	SUB ASSEMBLY	JUST-IN-TIME (JIT) OPERATIONS	HAZARDOUS MATERIALS	TEMPERATURE CONTROLLED	ISO CERTIFIED LOCATIONS	CALL CENTERS	ORDER MANAGEMENT	REVERSE LOGISTICS MANAGEMENT	BULK COMMODITIES HANDLING	CONSULTING SERVICES	LEAD LOGISTICS PROVIDER				
HEADWIN LOGISTICS 86-574-8775-4488 / www.headwin.com.cn / International	42	1	*	*	*	*	*	*	*	*	*	*	*	*	*	*	*	*	*	*	*	*	*	*	*	*	*	*	*	*	*	*	*	*		
HELLMANN WORLDWIDE LOGISTICS 49 541 605 0 / www.hellmann.net / Global	3,433	23	*	*	*	*	*	*	*	*	*	*	*	*	*	*	*	*	*	*	*	*	*	*	*	*	*	*	*	*	*	*	*	*		
HERCULES LOGISTICS 86-755-8358 0000 / www.hercules-logistics.com / International	140	20	*	*	*	*	*	*	*	*	*	*	*	*	*	*	*	*	*	*	*	*	*	*	*	*	*	*	*	*	*	*	*	*		
HITACHI TRANSPORT SYSTEM 81-3-5634-0333 / www.hitachi-hb.co.jp/english/ / International	6,156	707	*	*	*	*	*	*	*	*	*	*	*	*	*	*	*	*	*	*	*	*	*	*	*	*	*	*	*	*	*	*	*	*	*	
HMG SUPPLY CHAIN CO. 86-21-50368000 / www.hmglog.com / China	115	9	*	*	*	*	*	*	*	*	*	*	*	*	*	*	*	*	*	*	*	*	*	*	*	*	*	*	*	*	*	*	*	*	*	
HONOUR LANE SHIPPING 852-2544 1366 / www.hlsholding.com / Asia Pacific	100	5	*	*	*	*	*	*	*	*	*	*	*	*	*	*	*	*	*	*	*	*	*	*	*	*	*	*	*	*	*	*	*	*	*	
HUB GROUP 630-271-3600 / www.hubgroup.com / North America	3,374	0	*	*	*	*	*	*	*	*	*	*	*	*	*	*	*	*	*	*	*	*	*	*	*	*	*	*	*	*	*	*	*	*	*	
HUNAN SINSA LOGISTICS INVESTMENT 86-731-82958758 / www.sinsaw.com / China	300	4	*	*	*	*	*	*	*	*	*	*	*	*	*	*	*	*	*	*	*	*	*	*	*	*	*	*	*	*	*	*	*	*	*	
HURRYTOP LOGISTICS/CHINA NETWORK LOGISTICS 86-21-60829167 / www.hurrytop.com / Asia Pacific	50	57	*	*	*	*	*	*	*	*	*	*	*	*	*	*	*	*	*	*	*	*	*	*	*	*	*	*	*	*	*	*	*	*	*	
HYUNDAI GLOVIS 82-2-2054-7036 / www.glovis.net / International	10,635	39	*	*	*	*	*	*	*	*	*	*	*	*	*	*	*	*	*	*	*	*	*	*	*	*	*	*	*	*	*	*	*	*	*	
I.T.S. FABRY 33-327-537-777 / www.itsfabry.com / International	20	2	*	*	*	*	*	*	*	*	*	*	*	*	*	*	*	*	*	*	*	*	*	*	*	*	*	*	*	*	*	*	*	*	*	
IEDS LOGISTICS 509-922-0944 / www.ieds.net / U.S.-Regional	12	11	*	*	*	*	*	*	*	*	*	*	*	*	*	*	*	*	*	*	*	*	*	*	*	*	*	*	*	*	*	*	*	*	*	
IMPERIAL AFRICA LOGISTICS 27 11 821 5500 / www.imperiallogistics.co.za / International	2,106	40	*	*	*	*	*	*	*	*	*	*	*	*	*	*	*	*	*	*	*	*	*	*	*	*	*	*	*	*	*	*	*	*	*	*
INGRAM MICRO SUPPLY CHAIN SOLUTIONS 714-382-4845 / www.ingrammicrologistics.com / International	734	132	*	*	*	*	*	*	*	*	*	*	*	*	*	*	*	*	*	*	*	*	*	*	*	*	*	*	*	*	*	*	*	*	*	*
INNOTRAC 678-584-4040 / www.innotrac.com / International	100	10	*	*	*	*	*	*	*	*	*	*	*	*	*	*	*	*	*	*	*	*	*	*	*	*	*	*	*	*	*	*	*	*	*	*
INTEGRATED DISTRIBUTION SERVICES 317-837-7007 / www.teamidslogistics.com / U.S.	82	7	*	*	*	*	*	*	*	*	*	*	*	*	*	*	*	*	*	*	*	*	*	*	*	*	*	*	*	*	*	*	*	*	*	*
INTEGRATED LOGISTICS BERHAD 60 3 5631-7377 / www.ilb.com.my / Asia Pacific	39	9	*	*	*	*	*	*	*	*	*	*	*	*	*	*	*	*	*	*	*	*	*	*	*	*	*	*	*	*	*	*	*	*	*	*
INTERFULFILLMENT 877-513-1364 / www.interfulfillment.com / Canada	3	2	*	*	*	*	*	*	*	*	*	*	*	*	*	*	*	*	*	*	*	*	*	*	*	*	*	*	*	*	*	*	*	*	*	*
INTERSTATE DISTRIBUTOR 800-426-8560 / www.intd.com / North America	78	0	*	*	*	*	*	*	*	*	*	*	*	*	*	*	*	*	*	*	*	*	*	*	*	*	*	*	*	*	*	*	*	*	*	*
ITG 49 (08122) 567-0 / www.itg.de / International	209	5	*	*	*	*	*	*	*	*	*	*	*	*	*	*	*	*	*	*	*	*	*	*	*	*	*	*	*	*	*	*	*	*	*	*
J.B. HUNT (JBI, DCS & ICS) 800-643-3622 / www.jbhunt.com / North America	5,224	0	*	*	*	*	*	*	*	*	*	*	*	*	*	*	*	*	*	*	*	*	*	*	*	*	*	*	*	*	*	*	*	*	*	*
JACOBSON 800-636-6171 / www.jacobsonco.com / U.S.	800	141	*	*	*	*	*	*	*	*	*	*	*	*	*	*	*	*	*	*	*	*	*	*	*	*	*	*	*	*	*	*	*	*	*	*
JET FREIGHT GLOBAL 86-21-6357 0022 / www.jetfreight.com.cn / China	17	0	*	*	*	*	*	*	*	*	*	*	*	*	*	*	*	*	*	*	*	*	*	*	*	*	*	*	*	*	*	*	*	*	*	*
JIANGSU AIR & SEA FREIGHT FORWARDING 86-25-5225 1001 / www.nasfreight.com / China	15	2	*	*	*	*	*	*	*	*	*	*	*	*	*	*	*	*	*	*	*	*	*	*	*	*	*	*	*	*	*	*	*	*	*	*
JIANGSU UNIWILL LOGISTICS 86-25-8666 0000 / www.uniwill-logistics.com / China	500	0	*	*	*	*	*	*	*	*	*	*	*	*	*	*	*	*	*	*	*	*	*	*	*	*	*	*	*	*	*	*	*	*	*	*
JIANGSU XINNING MODERN LOGISTICS 86-512-5712 0911 / www.xinning.com.cn / China	60	27	*	*	*	*	*	*	*	*	*	*	*	*	*	*	*	*	*	*	*	*	*	*	*	*	*	*	*	*	*	*	*	*	*	*
JINGMAO EXPRESS (SUZHOU) 86-512-66077166 / www.szjexp.com / China	10	1	*	*	*	*	*	*	*	*	*	*	*	*	*	*	*	*	*	*	*	*	*	*	*	*	*	*	*	*	*	*	*	*	*	*
JSL 55 11 2377-7485 / www.jsl.com.br / South America	1,513	16	*	*	*	*	*	*	*	*	*	*	*	*	*	*	*	*	*	*	*	*	*	*	*	*	*	*	*	*	*	*	*	*	*	*

3PL SERVICES DIRECTORY



3PL

phone number / website / market area

TOTAL LOGISTICS REVENUE (US\$ MILLIONS)	NUMBER OF WAREHOUSES	SCM SYSTEMS				TRANSPORTATION MANAGEMENT						WAREHOUSE MANAGEMENT				SPECIAL SKILLS																							
		TMS (TRANSPORTATION MANAGEMENT SYSTEM)	TMS PLANNING/OPTIMIZATION	WMS (WAREHOUSE MANAGEMENT SYSTEM)	ORDER MANAGEMENT SYSTEM (OMS OR ERP)	CARRIER MANAGEMENT & CONTRACTING	DEDICATED CONTRACT CARRIAGE	FREIGHT BROKERAGE	RAIL	POOL DISTRIBUTION	MERGE IN TRANSIT	HOME DELIVERY	INSTALLATION/REMOVAL	AIR FREIGHT FORWARDING	OCEAN FREIGHT FORWARDING	INVOC	CUSTOMS	PORT SERVICES	INVENTORY CONTROL/VENDOR MANAGEMENT	PICK/PACK	KITTING	SUB ASSEMBLY	JUST-IN-TIME (JIT) OPERATIONS	HAZARDOUS MATERIALS	TEMPERATURE CONTROLLED	ISO CERTIFIED LOCATIONS	CALL CENTERS	ORDER MANAGEMENT	REVERSE LOGISTICS MANAGEMENT	BULK COMMODITIES HANDLING	CONSULTING SERVICES	LEAD LOGISTICS PROVIDER							
KANE IS ABLE 888-356-KANE (5263) / www.kaneisable.com / North America	145	18	*	*	*	*	*	*	*	*	*	*	*	*	*	*	*	*	*	*	*	*	*	*	*	*	*	*	*	*	*	*	*	*	*	*			
KELLER LOGISTICS GROUP 419-785-3208 / kellerlogistics.com / U.S.	50	8	*	*	*	*	*	*	*	*	*	*	*	*	*	*	*	*	*	*	*	*	*	*	*	*	*	*	*	*	*	*	*	*	*	*			
KENCO LOGISTIC SERVICES 423-643-3316 / www.kencogroup.com / North America	580	90	*	*	*	*	*	*	*	*	*	*	*	*	*	*	*	*	*	*	*	*	*	*	*	*	*	*	*	*	*	*	*	*	*	*			
KERRY LOGISTICS 852 2410 3600 / www.kerrylogistics.com / International	2,575	800	*	*	*	*	*	*	*	*	*	*	*	*	*	*	*	*	*	*	*	*	*	*	*	*	*	*	*	*	*	*	*	*	*	*	*		
KEYSTONE DEDICATED LOGISTICS 877-535-7717 / www.kdlog.com / International	19	2	*	*	*	*	*	*	*	*	*	*	*	*	*	*	*	*	*	*	*	*	*	*	*	*	*	*	*	*	*	*	*	*	*	*	*		
KINGWAY TRANSPORTATION 86-755-8364 6628 / www.kwtrans.com.cn / China	100	0	*	*	*	*	*	*	*	*	*	*	*	*	*	*	*	*	*	*	*	*	*	*	*	*	*	*	*	*	*	*	*	*	*	*	*		
KINTETSU WORLD EXPRESS 81-3-6863-6440 / www.kwe.com / Global	2,718	172	*	*	*	*	*	*	*	*	*	*	*	*	*	*	*	*	*	*	*	*	*	*	*	*	*	*	*	*	*	*	*	*	*	*	*		
KNICHEL LOGISTICS 724-449-3300 / www.knichellogistics.com / North America	39	0	*	*	*	*	*	*	*	*	*	*	*	*	*	*	*	*	*	*	*	*	*	*	*	*	*	*	*	*	*	*	*	*	*	*	*	*	
KNIGHT TRANSPORTATION 800-989-2000 / www.knighttrans.com / U.S.	147	1	*	*	*	*	*	*	*	*	*	*	*	*	*	*	*	*	*	*	*	*	*	*	*	*	*	*	*	*	*	*	*	*	*	*	*	*	
KONSORTIUM LOGISTIK BERHAD 603 5121 9988 / www.klb.my / Asia Pacific	87	2	*	*	*	*	*	*	*	*	*	*	*	*	*	*	*	*	*	*	*	*	*	*	*	*	*	*	*	*	*	*	*	*	*	*	*	*	
KONTANE LOGISTICS 843-352-0011 / www.kontanelogistics.com / U.S.-Regional	23	6	*	*	*	*	*	*	*	*	*	*	*	*	*	*	*	*	*	*	*	*	*	*	*	*	*	*	*	*	*	*	*	*	*	*	*	*	
KUEHNE + NAGEL INTERNATIONAL 201-413-5500 / www.kuehne-nagel.com / Global	22,587	500	*	*	*	*	*	*	*	*	*	*	*	*	*	*	*	*	*	*	*	*	*	*	*	*	*	*	*	*	*	*	*	*	*	*	*	*	*
L&M TRANSPORTATION SERVICES 800-632-3030 / www.lmts.com / North America	25	0	*	*	*	*	*	*	*	*	*	*	*	*	*	*	*	*	*	*	*	*	*	*	*	*	*	*	*	*	*	*	*	*	*	*	*	*	*
LANDAIR 888-LANDAIR (526-3247) / www.landair.com / U.S.	110	12	*	*	*	*	*	*	*	*	*	*	*	*	*	*	*	*	*	*	*	*	*	*	*	*	*	*	*	*	*	*	*	*	*	*	*	*	
LANDSTAR SYSTEM 800-872-9400 / www.landstar.com / International	1,301	0	*	*	*	*	*	*	*	*	*	*	*	*	*	*	*	*	*	*	*	*	*	*	*	*	*	*	*	*	*	*	*	*	*	*	*	*	
LANEY & DUKE TERMINAL WAREHOUSE 904-798-3500 / www.laneyduke.com / U.S.-Regional	5	4	*	*	*	*	*	*	*	*	*	*	*	*	*	*	*	*	*	*	*	*	*	*	*	*	*	*	*	*	*	*	*	*	*	*	*	*	*
LEANCOR SUPPLY CHAIN GROUP 859-283-9933 / www.LeanCor.com / North America	19	2	*	*	*	*	*	*	*	*	*	*	*	*	*	*	*	*	*	*	*	*	*	*	*	*	*	*	*	*	*	*	*	*	*	*	*	*	*
LEGACY SUPPLY CHAIN SERVICES 800-361-5028 Ext. 6 / www.legacyscs.com / North America	401	42	*	*	*	*	*	*	*	*	*	*	*	*	*	*	*	*	*	*	*	*	*	*	*	*	*	*	*	*	*	*	*	*	*	*	*	*	*
LESAINTE LOGISTICS 877-Know3PL / www.lesaint.com / North America	65	14	*	*	*	*	*	*	*	*	*	*	*	*	*	*	*	*	*	*	*	*	*	*	*	*	*	*	*	*	*	*	*	*	*	*	*	*	*
LEVENT 55 11 3179 0001 / www.levent.com.br / Brazil	8	0	*	*	*	*	*	*	*	*	*	*	*	*	*	*	*	*	*	*	*	*	*	*	*	*	*	*	*	*	*	*	*	*	*	*	*	*	*
LF LOGISTICS 852 2300 2300 / www.lifung.com / International	526	150	*	*	*	*	*	*	*	*	*	*	*	*	*	*	*	*	*	*	*	*	*	*	*	*	*	*	*	*	*	*	*	*	*	*	*	*	*
LGI LOGISTICS GROUP INTERNATIONAL 49 (0) 7032 2291 0 / www.lgi.de / Europe	416	45	*	*	*	*	*	*	*	*	*	*	*	*	*	*	*	*	*	*	*	*	*	*	*	*	*	*	*	*	*	*	*	*	*	*	*	*	*
LILY TRANSPORTATION 781-449-8811 / www.lily.com / U.S.-Regional	70	0	*	*	*	*	*	*	*	*	*	*	*	*	*	*	*	*	*	*	*	*	*	*	*	*	*	*	*	*	*	*	*	*	*	*	*	*	*
LIVINGSTON INTERNATIONAL 800-837-1063 / www.livingstonintl.com / International	415	10	*	*	*	*	*	*	*	*	*	*	*	*	*	*	*	*	*	*	*	*	*	*	*	*	*	*	*	*	*	*	*	*	*	*	*	*	*
LOG-IN LOGÍSTICA INTERMODAL 55 21 2111-6500 / www.loginlogistica.com.br / Brazil	377	0	*	*	*	*	*	*	*	*	*	*	*	*	*	*	*	*	*	*	*	*	*	*	*	*	*	*	*	*	*	*	*	*	*	*	*	*	*
LOGÍSTICA INDUSTRIAL (562) 413 4000 / www.loginsa.com / Chile	50	6	*	*	*	*	*	*	*	*	*	*	*	*	*	*	*	*	*	*	*	*	*	*	*	*	*	*	*	*	*	*	*	*	*	*	*	*	*
LOGISTICS MANAGEMENT SOLUTIONS 800-355-2153 / www.lmslogistics.com / North America	150	0	*	*	*	*	*	*	*	*	*	*	*	*	*	*	*	*	*	*	*	*	*	*	*	*	*	*	*	*	*	*	*	*	*	*	*	*	*
LOGWIN 352 719690-1353 / www.logwin-logistics.com / International	1,620	370	*	*	*	*	*	*	*	*	*	*	*	*	*	*	*	*	*	*	*	*	*	*	*	*	*	*	*	*	*	*	*	*	*	*	*	*	*

3PL SERVICES DIRECTORY



3PL

phone number / website / market area

	TOTAL LOGISTICS REVENUE (US\$ MILLIONS)	NUMBER OF WAREHOUSES	SCM SYSTEMS				TRANSPORTATION MANAGEMENT							WAREHOUSE MANAGEMENT				SPECIAL SKILLS														
			TMS (TRANSPORTATION MANAGEMENT SYSTEM)	TMS PLANNING/OPTIMIZATION	WMS (WAREHOUSE MANAGEMENT SYSTEM)	ORDER MANAGEMENT SYSTEM (OMS OR ERP)	CARRIER MANAGEMENT & CONTRACTING	DEDICATED CONTRACT CARRIAGE	FREIGHT BROKERAGE	RAIL	POOL DISTRIBUTION	MERGE IN TRANSIT	HOME DELIVERY	INSTALLATION/REMOVAL	AIR FREIGHT FORWARDING	OCEAN FREIGHT FORWARDING	INVOC	CUSTOMS	PORT SERVICES	INVENTORY CONTROL/VENDOR MANAGEMENT	PICK/PACK	KITTING	SUB ASSEMBLY	JUST-IN-TIME (JIT) OPERATIONS	HAZARDOUS MATERIALS	TEMPERATURE CONTROLLED	ISO CERTIFIED LOCATIONS	CALL CENTERS	ORDER MANAGEMENT	REVERSE LOGISTICS MANAGEMENT	BULK COMMODITIES HANDLING	CONSULTING SERVICES
LONG SAIL INTERNATIONAL LOGISTICS 86-755-2511 1026 / www.longsailing.net / China	250	1	*	*	*	*	*						*	*	*	*	*	*	*	*					*	*					*	
LONG SHENG LOGISTICS 86-22-2334 6666 / www.longshenglogistics.com / China	50	1	*		*	*	*						*	*	*	*	*	*	*	*					*	*					*	
LS DISTRIBUTION LOGISTICS 514-355-5674 / www.lsdli.com / Canada	3	1			*	*	*	*	*	*	*	*	*	*	*	*	*	*	*	*	*	*	*	*	*	*	*	*	*	*	*	*
LUÍS SIMÕES 351 219 827 500 / www.luis-simoes.com / Iberian Peninsula	308	20	*	*	*	*	*	*	*	*	*	*	*	*	*	*	*	*	*	*	*	*	*	*	*	*	*	*	*	*	*	*
LYNNCO SUPPLY CHAIN SOLUTIONS 866-872-3264 / www.lynnco-scs.com / North America	70	0	*	*	*	*	*	*	*	*	*	*	*	*	*	*	*	*	*	*	*	*	*	*	*	*	*	*	*	*	*	*
M2 LOGISTICS 920-569-8498 / www.m2logistics.com / North America	65	0	*	*	*	*	*	*	*	*	*	*	*	*	*	*	*	*	*	*	*	*	*	*	*	*	*	*	*	*	*	*
M33 INTEGRATED SOLUTIONS 877-369-0343 / www.m33integrated.com / North America	160	0	*	*	*	*	*	*	*	*	*	*	*	*	*	*	*	*	*	*	*	*	*	*	*	*	*	*	*	*	*	*
MAINFREIGHT 64 9 259 5500 / www.mainfreight.com / International	1,578	23	*	*	*	*	*	*	*	*	*	*	*	*	*	*	*	*	*	*	*	*	*	*	*	*	*	*	*	*	*	*
MALLORY ALEXANDER INTERNATIONAL LOGISTICS 901-367-9400 / www.mallorygroup.com / International	250	12	*	*	*	*	*	*	*	*	*	*	*	*	*	*	*	*	*	*	*	*	*	*	*	*	*	*	*	*	*	*
MANCO LOGISTICS 86-21-51592929 / www.manco-logistics.com / China	80	0	*	*	*	*	*	*	*	*	*	*	*	*	*	*	*	*	*	*	*	*	*	*	*	*	*	*	*	*	*	*
MATSON LOGISTICS 925-887-6200 / www.matson.com / North America	408	16	*	*	*	*	*	*	*	*	*	*	*	*	*	*	*	*	*	*	*	*	*	*	*	*	*	*	*	*	*	*
MD LOGISTICS 317-838-8900 / www.mdlogistics.com / North America	30	3	*	*	*	*	*	*	*	*	*	*	*	*	*	*	*	*	*	*	*	*	*	*	*	*	*	*	*	*	*	*
MEGATRUX 800-544-8831 / www.megatrx.com / International	140	5	*	*	*	*	*	*	*	*	*	*	*	*	*	*	*	*	*	*	*	*	*	*	*	*	*	*	*	*	*	*
MEILIAN INTERNATIONAL WAREHOUSE & TRANSPORT (GROUP) 86-23-6774 4445 / www.mltrans.net / China	60	2	*	*	*	*	*	*	*	*	*	*	*	*	*	*	*	*	*	*	*	*	*	*	*	*	*	*	*	*	*	*
MENLO WORLDWIDE LOGISTICS 415-486-2649 / www.menloworldwide.com / Global	1,540	138	*	*	*	*	*	*	*	*	*	*	*	*	*	*	*	*	*	*	*	*	*	*	*	*	*	*	*	*	*	*
MERITOR LOGISTICS 859-817-3913 / www.meritor.com/logistics / International	917	13	*	*	*	*	*	*	*	*	*	*	*	*	*	*	*	*	*	*	*	*	*	*	*	*	*	*	*	*	*	*
MIDWEST EXPRESS GROUP 888-643-9397 / www.midwestexpressgroup.com / North America	185	7	*	*	*	*	*	*	*	*	*	*	*	*	*	*	*	*	*	*	*	*	*	*	*	*	*	*	*	*	*	*
MIQ LOGISTICS 913-696-7100 / www.miq.com / International	447	10	*	*	*	*	*	*	*	*	*	*	*	*	*	*	*	*	*	*	*	*	*	*	*	*	*	*	*	*	*	*
MODE TRANSPORTATION 972-447-0075 / www.modetransportation.com / North America	823	0	*	*	*	*	*	*	*	*	*	*	*	*	*	*	*	*	*	*	*	*	*	*	*	*	*	*	*	*	*	*
MODUSLINK GLOBAL SOLUTIONS 781-663-5000 / www.moduslink.com / International	755	30	*	*	*	*	*	*	*	*	*	*	*	*	*	*	*	*	*	*	*	*	*	*	*	*	*	*	*	*	*	*
NEOVIA LOGISTICS SERVICES 469-513-7000 / www.neovialogistics.com / International	800	100	*	*	*	*	*	*	*	*	*	*	*	*	*	*	*	*	*	*	*	*	*	*	*	*	*	*	*	*	*	*
NETWORK GLOBAL LOGISTICS 614-565-7118 / www.nglog.com / North America	106	13	*	*	*	*	*	*	*	*	*	*	*	*	*	*	*	*	*	*	*	*	*	*	*	*	*	*	*	*	*	*
NEW BREED LOGISTICS 336-232-4100 / www.newbreed.com / International	597	70	*	*	*	*	*	*	*	*	*	*	*	*	*	*	*	*	*	*	*	*	*	*	*	*	*	*	*	*	*	*
NEXUS DISTRIBUTION 800-536-5220 / www.nexusdistribution.com / North America	35	5	*	*	*	*	*	*	*	*	*	*	*	*	*	*	*	*	*	*	*	*	*	*	*	*	*	*	*	*	*	*
NFI 877-634-3777 / www.nfiindustries.com / North America	1,091	74	*	*	*	*	*	*	*	*	*	*	*	*	*	*	*	*	*	*	*	*	*	*	*	*	*	*	*	*	*	*
NINGBO HAILIAN LOGISTICS 86-574-56800100 / www.hlwl.com.cn / China	30	2	*							*											*	*	*									
NIPPON EXPRESS 81 (3) 6251-1111 / www.nipponexpress.com / Global	17,317	401	*	*	*	*	*	*	*	*	*	*	*	*	*	*	*	*	*	*	*	*	*	*	*	*	*	*	*	*	*	*

3PL SERVICES DIRECTORY



3PL

phone number / website / market area

		SCM SYSTEMS											TRANSPORTATION MANAGEMENT								WAREHOUSE MANAGEMENT					SPECIAL SKILLS												
		TOTAL LOGISTICS REVENUE (US\$ MILLIONS)		NUMBER OF WAREHOUSES		TMS (TRANSPORTATION MANAGEMENT SYSTEM)	TMS PLANNING/OPTIMIZATION	WMS (WAREHOUSE MANAGEMENT SYSTEM)	ORDER MANAGEMENT SYSTEM (OMS OR ERP)	CARRIER MANAGEMENT & CONTRACTING	DEDICATED CONTRACT CARRIAGE	FREIGHT BROKERAGE	RAIL	POOL DISTRIBUTION	MERGE IN TRANSIT	HOME DELIVERY	INSTALLATION/REMOVAL	AIR FREIGHT FORWARDING	OCEAN FREIGHT FORWARDING	INVOC	CUSTOMS	PORT SERVICES	INVENTORY CONTROL/VENDOR MANAGEMENT	PICK/PACK	KITTING	SUB ASSEMBLY	JUST-IN-TIME (JIT) OPERATIONS	HAZARDOUS MATERIALS	TEMPERATURE CONTROLLED	ISO CERTIFIED LOCATIONS	CALL CENTERS	ORDER MANAGEMENT	REVERSE LOGISTICS MANAGEMENT	BULK COMMODITIES HANDLING	CONSULTING SERVICES	LEAD LOGISTICS PROVIDER		
NISSIN/NISSIN GROUP		1,420		45		*	*	*	*	*	*	*	*	*	*	*	*	*	*	*	*	*	*	*	*	*	*	*	*	*	*	*	*	*	*	*	*	*
81 45 671 6111 / www.nissin-tw.co.jp / International																																						
NNR GLOBAL LOGISTICS		1,745		91		*	*	*	*	*	*	*	*	*	*	*	*	*	*	*	*	*	*	*	*	*	*	*	*	*	*	*	*	*	*	*	*	*
81-3-4332-5060 / www.nnr.co.jp/global_logistics/index.htm / Global																																						
NONSTOPDELIVERY		40		0		*	*		*													*								*		*		*		*		
703-964-9500 / www.nonstopdelivery.com / U.S.																																						
NORBERT DENTRESSANGLE		2,782		281		*	*	*	*	*	*	*	*	*	*	*	*	*	*	*	*	*	*	*	*	*	*	*	*	*	*	*	*	*	*	*	*	*
33 (0)4 72 83 66 00 / www.norbert-dentressangle.com / International																																						
ODW LOGISTICS		123		15		*	*	*	*	*	*											*	*	*	*	*	*	*	*	*	*	*	*	*	*	*	*	
614-497-1660 / www.odwlogistics.com / U.S.																																						
ODYSSEY LOGISTICS & TECHNOLOGY		500		0		*	*	*	*	*	*	*	*	*	*	*	*	*	*	*	*	*	*	*	*	*	*	*	*	*	*	*	*	*	*	*	*	*
203-448-3900 / www.odysseylogistics.com / International																																						
OHL		1,290		130		*	*	*	*	*	*	*	*	*	*	*	*	*	*	*	*	*	*	*	*	*	*	*	*	*	*	*	*	*	*	*	*	*
877-401-6400 / www.ohl.com / International																																						
OIA GLOBAL		500		6		*	*	*	*	*	*	*	*	*	*	*	*	*	*	*	*	*	*	*	*	*	*	*	*	*	*	*	*	*	*	*	*	*
503-736-5900 / www.oiaglobal.com / International																																						
OM HEALTHCARE LOGISTICS		30		2		*	*	*	*	*	*	*	*	*	*	*	*	*	*	*	*	*	*	*	*	*	*	*	*	*	*	*	*	*	*	*	*	*
804-723-7000 / www.omhcl.com / U.S.																																						
ONEST LOGISTICS		36		29		*	*	*	*	*	*	*	*	*	*	*	*	*	*	*	*	*	*	*	*	*	*	*	*	*	*	*	*	*	*	*	*	*
52 55 5010 5810 / www.grupoonest.com / Mexico																																						
OOCL LOGISTICS		596		300		*	*	*	*	*	*	*	*	*	*	*	*	*	*	*	*	*	*	*	*	*	*	*	*	*	*	*	*	*	*	*	*	*
(852) 2990 0100 / www.oocllogistics.com / International																																						
ORIENTAL LOGISTICS HOLDINGS		22		6		*	*	*	*	*	*	*	*	*	*	*	*	*	*	*	*	*	*	*	*	*	*	*	*	*	*	*	*	*	*	*	*	*
852 2541 3337 / www.orientallogistics.com.cn / Asia Pacific																																						
P.G. LOGISTICS GROUP		250		10		*	*	*	*	*	*	*	*	*	*	*	*	*	*	*	*	*	*	*	*	*	*	*	*	*	*	*	*	*	*	*	*	*
400-8856568 / www.pgl-world.com / China																																						
PACIFIC MOUNTAIN LOGISTICS		5		5		*	*	*	*	*	*	*	*	*	*	*	*	*	*	*	*	*	*	*	*	*	*	*	*	*	*	*	*	*	*	*	*	*
909-581-7590 / www.pacmntlog.com / U.S.-Regional																																						
PANALPINA WORLD TRANSPORT (HOLDING)		7,293		160		*	*	*	*	*	*	*	*	*	*	*	*	*	*	*	*	*	*	*	*	*	*	*	*	*	*	*	*	*	*	*	*	*
41 61 226 11 11 / www.panalpina.com / Global																																						
PANTOS LOGISTICS		2,546		89		*	*	*	*	*	*	*	*	*	*	*	*	*	*	*	*	*	*	*	*	*	*	*	*	*	*	*	*	*	*	*	*	*
82-2-3771-2114 / www.pantos.com / International																																						
PATTERSON WAREHOUSES		28		7		*	*	*	*	*	*	*	*	*	*	*	*	*	*	*	*	*	*	*	*	*	*	*	*	*	*	*	*	*	*	*	*	*
901-344-2600 / www.patwar.com / North America																																						
PENSKELOGISTICS		968		105		*	*	*	*	*	*	*	*	*	*	*	*	*	*	*	*	*	*	*	*	*	*	*	*	*	*	*	*	*	*	*	*	*
800-529-6531 / www.penskelogistics.com / International																																						
PENTA GLOBAL LOGISTICS		60		1		*	*	*	*	*	*	*	*	*	*	*	*	*	*	*	*	*	*	*	*	*	*	*	*	*	*	*	*	*	*	*	*	*
86-10-6460 6290 / www.penta-logistics.com / China																																						
PERFECTEVER LOGISTICS (NINGBO)		300		2		*	*	*	*	*	*	*	*	*	*	*	*	*	*	*	*	*	*	*	*	*	*	*	*	*	*	*	*	*	*	*	*	*
86-574-8702 5641 / www.nbtsl.com / China																																						
PERFORMANCE TEAM		255		21		*	*	*	*	*	*	*	*	*	*	*	*	*	*	*	*	*	*	*	*	*	*	*	*	*	*	*	*	*	*	*	*	*
562-345-2200 / www.performanceteam.net / U.S.-Regional																																						
PFSWEB		242		6		*	*	*	*	*	*	*	*	*	*	*	*	*	*	*	*	*	*	*	*	*	*	*	*	*	*	*	*	*	*	*	*	*
800-920-4959 / www.pfsweb.com / International																																						
PILOT FREIGHT SERVICES		488		70		*	*	*	*	*	*	*	*	*	*	*	*	*	*	*	*	*	*	*	*	*	*	*	*	*	*	*	*	*	*	*	*	*
610-891-8100 / www.pilotdelivers.com / International																																						
PLS LOGISTICS SERVICES		399		0		*	*	*	*	*	*	*	*	*	*	*	*	*	*	*	*	*	*	*	*	*	*	*	*	*	*	*	*	*	*	*	*	*
724-814-5100 / www.plslogistics.com / North America																																						
POH TIONG CHOON LOGISTICS		86		2		*	*	*	*	*	*	*	*	*	*	*	*	*	*	*	*	*	*	*	*	*	*	*	*	*	*	*	*	*	*	*	*	*
65 6268 2522 / www.ptclogistics.com.sg / Singapore																																						
PORT LOGISTICS GROUP		165		12		*	*	*	*	*	*	*	*	*	*	*	*	*	*	*	*	*	*	*	*	*	*	*	*	*	*	*	*	*	*	*	*	*
973-249-1230 Ext. 1310 / www.portlogisticsgroup.com / U.S.																																						

3PL SERVICES DIRECTORY



3PL

phone number / website / market area

		SCM SYSTEMS	TRANSPORTATION MANAGEMENT										WAREHOUSE MANAGEMENT				SPECIAL SKILLS																			
TOTAL LOGISTICS REVENUE (US\$ MILLIONS)	NUMBER OF WAREHOUSES	TMS (TRANSPORTATION MANAGEMENT SYSTEM)	TMS PLANNING/OPTIMIZATION	WMS (WAREHOUSE MANAGEMENT SYSTEM)	ORDER MANAGEMENT SYSTEM (OMS OR ERP)	CARRIER MANAGEMENT & CONTRACTING	DEDICATED CONTRACT CARRIAGE	FREIGHT BROKERAGE	RAIL	POOL DISTRIBUTION	MERGE IN TRANSIT	HOME DELIVERY	INSTALLATION/REMOVAL	AIR FREIGHT FORWARDING	OCEAN FREIGHT FORWARDING	INVOC	CUSTOMS	PORT SERVICES	INVENTORY CONTROL/VENDOR MANAGEMENT	PICK/PACK	KITTING	SUB ASSEMBLY	JUST-IN-TIME (JIT) OPERATIONS	HAZARDOUS MATERIALS	TEMPERATURE CONTROLLED	ISO CERTIFIED LOCATIONS	CALL CENTERS	ORDER MANAGEMENT	REVERSE LOGISTICS MANAGEMENT	BULK COMMODITIES HANDLING	CONSULTING SERVICES	LEAD LOGISTICS PROVIDER				
PRAIRIE TRANSPORTATION 800-929-8003 / www.prairietransportation.com / North America	19	0				*	*	*																												
PROTRANS INTERNATIONAL 888-776-8726 / www.protrans.com / North America	211	27	*	*	*	*	*	*		*	*					*	*	*	*	*	*		*		*	*	*	*	*	*	*	*	*	*		
QINGDAO FORTUNE LOGISTICS 86-532-8288 1717 / www.fortuneqd.com / China	130	1	*	*	*	*	*	*		*	*			*	*	*	*	*	*	*	*		*	*	*	*	*	*	*	*	*	*	*	*		
QINGDAO JET MARINE LOGISTICS 86-532-8266 8811 / www.jms-logistics.com / China	160	1	*	*	*	*	*	*		*	*			*	*	*	*	*	*	*	*		*	*	*	*	*	*	*	*	*	*	*	*		
QINGDAO SMART CARGO INTERNATIONAL SERVICES 86 532 80999997 / www.smartcargo.cn.9998/ / International	38	0	*	*	*	*	*	*		*	*			*	*	*	*	*	*	*	*		*	*	*	*	*	*	*	*	*	*	*	*		
R2 LOGISTICS 904-394-4677 / www.r2logisticsteam.com / North America	70	0	*	*	*	*	*	*		*	*			*	*	*	*	*	*	*	*		*	*	*	*	*	*	*	*	*	*	*	*		
REALOGISTICS INTERNATIONAL (BEIJING) 86-10-5869 9689 / www.realogistics.net / China	50	1	*	*	*	*	*	*		*	*			*	*	*	*	*	*	*	*		*	*	*	*	*	*	*	*	*	*	*	*	*	
REDPACK 52 55 5278 8360 / www.redpack.com.mx / Mexico	53	6	*	*	*	*	*	*		*	*			*	*	*	*	*	*	*	*		*	*	*	*	*	*	*	*	*	*	*	*	*	
REGAL LOGISTICS 866-300-5580 / www.regallogistics.com / North America	21	6	*	*	*	*	*	*		*	*			*	*	*	*	*	*	*	*		*	*	*	*	*	*	*	*	*	*	*	*	*	
RETRANS 901-271-8830 / www.re-trans.com / North America	450	0	*	*	*	*	*	*		*	*			*	*	*	*	*	*	*	*		*	*	*	*	*	*	*	*	*	*	*	*	*	
RGL 920-432-8632 / www.rgllogistics.com / U.S.-Regional	43	12	*	*	*	*	*	*		*	*			*	*	*	*	*	*	*	*		*	*	*	*	*	*	*	*	*	*	*	*	*	
RICHLAND LOGISTICS SERVICES 65 6419 7500 / www.richlandlogistics.com / Asia Pacific	53	10	*	*	*	*	*	*		*	*			*	*	*	*	*	*	*	*		*	*	*	*	*	*	*	*	*	*	*	*	*	
RIVERSTAR 507-452-5109 / www.riverstarinc.com / North America	33	3	*	*	*	*	*	*		*	*			*	*	*	*	*	*	*	*		*	*	*	*	*	*	*	*	*	*	*	*	*	
ROAR LOGISTICS 716-833-7878 / www.roarlogistics.com / International	43	0	*	*	*	*	*	*		*	*			*	*	*	*	*	*	*	*		*	*	*	*	*	*	*	*	*	*	*	*	*	
ROCKFARM SUPPLY CHAIN SOLUTIONS 815-573-0155 / www.rockfarm.com / U.S.	75	0	*	*	*	*	*	*		*	*			*	*	*	*	*	*	*	*		*	*	*	*	*	*	*	*	*	*	*	*	*	
ROUND THE WORLD LOGISTICS & SUPPLY CHAIN MANAGEMENT 86-755-88312881 / www.rtwlscm.com / China	65	0	*	*	*	*	*	*		*	*			*	*	*	*	*	*	*	*		*	*	*	*	*	*	*	*	*	*	*	*	*	
RSI LOGISTICS 517-349-7713 / www.rsilogistics.com / North America	100	5	*	*	*	*	*	*		*	*			*	*	*	*	*	*	*	*		*	*	*	*	*	*	*	*	*	*	*	*	*	
RUAN 866-782-6669 / www.ruan.com / North America	807	4	*	*	*	*	*	*		*	*			*	*	*	*	*	*	*	*		*	*	*	*	*	*	*	*	*	*	*	*	*	
RUDOLPH LOGISTIK GRUPPE 49 561 4991-0 / www.rudolph-log.com / International	369	60	*	*	*	*	*	*		*	*			*	*	*	*	*	*	*	*		*	*	*	*	*	*	*	*	*	*	*	*	*	*
RYDER SUPPLY CHAIN SOLUTIONS 888-887-9337 / www.ryderscs.com / International	2,383	233	*	*	*	*	*	*		*	*			*	*	*	*	*	*	*	*		*	*	*	*	*	*	*	*	*	*	*	*	*	*
SADDLE CREEK LOGISTICS SERVICES 888-878-1177 / www.sclogistics.com / North America	358	37	*	*	*	*	*	*		*	*			*	*	*	*	*	*	*	*		*	*	*	*	*	*	*	*	*	*	*	*	*	*
SANKYU 81-3-4334-3808 / www.sankyu.co.jp/en/ / International	2,293	176	*	*	*	*	*	*		*	*			*	*	*	*	*	*	*	*		*	*	*	*	*	*	*	*	*	*	*	*	*	*
SANYUAN YUNTONG INTERNATIONAL LOGISTICS 86-10-6440 2211 / www.bssy.com / China	80	0	*	*	*	*	*	*		*	*			*	*	*	*	*	*	*	*		*	*	*	*	*	*	*	*	*	*	*	*	*	*
SATARIA GROUP 317-536-4800 / www.satariagroup.com / U.S.	16	1	*	*	*	*	*	*		*	*			*	*	*	*	*	*	*	*		*	*	*	*	*	*	*	*	*	*	*	*	*	*
SCANWELL LOGISTICS (HK) (852) 2796 0678 / www.scanwell.com / International	300	20	*	*	*	*	*	*		*	*			*	*	*	*	*	*	*	*		*	*	*	*	*	*	*	*	*	*	*	*	*	*
SCHNEIDER LOGISTICS 866-875-9046 / www.schneider.com / North America	2,280	15	*	*	*	*	*	*		*	*			*	*	*	*	*	*	*	*		*	*	*	*	*	*	*	*	*	*	*	*	*	*
SCHNEIDER NATIONAL DEDICATED SERVICES 800-558-6767 / www.schneider.com / North America	570	0	*	*	*	*	*	*		*	*			*	*	*	*	*	*	*	*		*	*	*	*	*	*	*	*	*	*	*	*	*	*

3PL SERVICES DIRECTORY



3PL
phone number / website / market area

		SCM SYSTEMS	TRANSPORTATION MANAGEMENT											WAREHOUSE MANAGEMENT				SPECIAL SKILLS																	
TOTAL LOGISTICS REVENUE (US\$ MILLIONS)	NUMBER OF WAREHOUSES	TMS (TRANSPORTATION MANAGEMENT SYSTEM)	TMS PLANNING/OPTIMIZATION	WMS (WAREHOUSE MANAGEMENT SYSTEM)	ORDER MANAGEMENT SYSTEM (OMS OR ERP)	CARRIER MANAGEMENT & CONTRACTING	DEDICATED CONTRACT CARRIAGE	FREIGHT BROKER/AGE	RAIL	POOL DISTRIBUTION	MERGE IN TRANSIT	HOME DELIVERY	INSTALLATION/REMOVAL	AIR FREIGHT FORWARDING	OCEAN FREIGHT FORWARDING	NVOCC	CUSTOMS	PORT SERVICES	INVENTORY CONTROL/VENDOR MANAGEMENT	PICK/PAK	KITTING	SUB ASSEMBLY	JUST-IN-TIME (JIT) OPERATIONS	HAZARDOUS MATERIALS	TEMPERATURE CONTROLLED	ISO CERTIFIED LOCATIONS	CALL CENTERS	ORDER MANAGEMENT	REVERSE LOGISTICS MANAGEMENT	BULK COMMODITIES HANDLING	CONSULTING SERVICES	LEAD LOGISTICS PROVIDER			
181	20	*	*	*	*	*	*	*	*	*	*	*	*	*	*	*	*	*	*	*	*	*	*	*	*	*	*	*	*	*	*	*	*	*	
68	4	*	*	*	*	*	*	*	*	*	*	*	*	*	*	*	*	*	*	*	*	*	*	*	*	*	*	*	*	*	*	*	*	*	
7,263	90	*	*	*	*	*	*	*	*	*	*	*	*	*	*	*	*	*	*	*	*	*	*	*	*	*	*	*	*	*	*	*	*	*	
36	6	*	*	*	*	*	*	*	*	*	*	*	*	*	*	*	*	*	*	*	*	*	*	*	*	*	*	*	*	*	*	*	*	*	
40	21	*	*	*	*	*	*	*	*	*	*	*	*	*	*	*	*	*	*	*	*	*	*	*	*	*	*	*	*	*	*	*	*	*	
200	48	*	*	*	*	*	*	*	*	*	*	*	*	*	*	*	*	*	*	*	*	*	*	*	*	*	*	*	*	*	*	*	*	*	
100	0	*	*	*	*	*	*	*	*	*	*	*	*	*	*	*	*	*	*	*	*	*	*	*	*	*	*	*	*	*	*	*	*	*	
50	3	*	*	*	*	*	*	*	*	*	*	*	*	*	*	*	*	*	*	*	*	*	*	*	*	*	*	*	*	*	*	*	*	*	
125	10	*	*	*	*	*	*	*	*	*	*	*	*	*	*	*	*	*	*	*	*	*	*	*	*	*	*	*	*	*	*	*	*	*	*
120	3	*	*	*	*	*	*	*	*	*	*	*	*	*	*	*	*	*	*	*	*	*	*	*	*	*	*	*	*	*	*	*	*	*	*
8	1	*	*	*	*	*	*	*	*	*	*	*	*	*	*	*	*	*	*	*	*	*	*	*	*	*	*	*	*	*	*	*	*	*	*
15	1	*	*	*	*	*	*	*	*	*	*	*	*	*	*	*	*	*	*	*	*	*	*	*	*	*	*	*	*	*	*	*	*	*	*
120	1	*	*	*	*	*	*	*	*	*	*	*	*	*	*	*	*	*	*	*	*	*	*	*	*	*	*	*	*	*	*	*	*	*	*
50	5	*	*	*	*	*	*	*	*	*	*	*	*	*	*	*	*	*	*	*	*	*	*	*	*	*	*	*	*	*	*	*	*	*	*
10	2	*	*	*	*	*	*	*	*	*	*	*	*	*	*	*	*	*	*	*	*	*	*	*	*	*	*	*	*	*	*	*	*	*	*
160	1	*	*	*	*	*	*	*	*	*	*	*	*	*	*	*	*	*	*	*	*	*	*	*	*	*	*	*	*	*	*	*	*	*	*
50	1	*	*	*	*	*	*	*	*	*	*	*	*	*	*	*	*	*	*	*	*	*	*	*	*	*	*	*	*	*	*	*	*	*	*
65	2	*	*	*	*	*	*	*	*	*	*	*	*	*	*	*	*	*	*	*	*	*	*	*	*	*	*	*	*	*	*	*	*	*	*
16	1	*	*	*	*	*	*	*	*	*	*	*	*	*	*	*	*	*	*	*	*	*	*	*	*	*	*	*	*	*	*	*	*	*	*
50	2	*	*	*	*	*	*	*	*	*	*	*	*	*	*	*	*	*	*	*	*	*	*	*	*	*	*	*	*	*	*	*	*	*	*
65	9	*	*	*	*	*	*	*	*	*	*	*	*	*	*	*	*	*	*	*	*	*	*	*	*	*	*	*	*	*	*	*	*	*	*
40	1	*	*	*	*	*	*	*	*	*	*	*	*	*	*	*	*	*	*	*	*	*	*	*	*	*	*	*	*	*	*	*	*	*	*
8	1	*	*	*	*	*	*	*	*	*	*	*	*	*	*	*	*	*	*	*	*	*	*	*	*	*	*	*	*	*	*	*	*	*	*
7,738	352	*	*	*	*	*	*	*	*	*	*	*	*	*	*	*	*	*	*	*	*	*	*	*	*	*	*	*	*	*	*	*	*	*	*
8	0	*	*	*	*	*	*	*	*	*	*	*	*	*	*	*	*	*	*	*	*	*	*	*	*	*	*	*	*	*	*	*	*	*	*
107	2	*	*	*	*	*	*	*	*	*	*	*	*	*	*	*	*	*	*	*	*	*	*	*	*	*	*	*	*	*	*	*	*	*	*
193	19	*	*	*	*	*	*	*	*	*	*	*	*	*	*	*	*	*	*	*	*	*	*	*	*	*	*	*	*	*	*	*	*	*	*

3PL SERVICES DIRECTORY



3PL

phone number / website / market area

	TOTAL LOGISTICS REVENUE (US\$ MILLIONS)	NUMBER OF WAREHOUSES	SCM SYSTEMS			TRANSPORTATION MANAGEMENT							WAREHOUSE MANAGEMENT				SPECIAL SKILLS																						
			TMS (TRANSPORTATION MANAGEMENT SYSTEM)	TMS PLANNING/OPTIMIZATION	WMS (WAREHOUSE MANAGEMENT SYSTEM)	ORDER MANAGEMENT SYSTEM (OMS OR ERP)	CARRIER MANAGEMENT & CONTRACTING	DEDICATED CONTRACT CARRIAGE	FREIGHT BROKERAGE	RAIL	POOL DISTRIBUTION	MERGE IN TRANSIT	HOME DELIVERY	INSTALLATION/REMOVAL	AIR FREIGHT FORWARDING	OCEAN FREIGHT FORWARDING	INVOC	CUSTOMS	PORT SERVICES	INVENTORY CONTROL/VENDOR MANAGEMENT	PICK/PACK	KITTING	SUB ASSEMBLY	JUST-IN-TIME (JIT) OPERATIONS	HAZARDOUS MATERIALS	TEMPERATURE CONTROLLED	ISO CERTIFIED LOCATIONS	CALL CENTERS	ORDER MANAGEMENT	REVERSE LOGISTICS MANAGEMENT	BULK COMMODITIES HANDLING	CONSULTING SERVICES	LEAD LOGISTICS PROVIDER						
SUDAMERICANA AGENCIAS AÉREAS Y MARÍTIMAS 56-32-220-1229 / www.saamsa.com / International	173	13	*	*	*	*	*	*	*	*	*	*	*	*	*	*	*	*	*	*	*	*	*	*	*	*	*	*	*	*	*	*	*	*	*	*	*	*	
SUN LOGISTICS 852-2947-0022 / www.hksunlogistics.com / Asia Pacific	10	2	*	*	*	*	*	*	*	*	*	*	*	*	*	*	*	*	*	*	*	*	*	*	*	*	*	*	*	*	*	*	*	*	*	*	*		
SUNTECK 561-988-9456 / www.suntecktransportgroup.com / North America	296	0	*	*	*	*	*	*	*	*	*	*	*	*	*	*	*	*	*	*	*	*	*	*	*	*	*	*	*	*	*	*	*	*	*	*	*	*	
SUPPLA 571 747 0370 / www.suppla.com / Colombia	111	53	*	*	*	*	*	*	*	*	*	*	*	*	*	*	*	*	*	*	*	*	*	*	*	*	*	*	*	*	*	*	*	*	*	*	*	*	
SUZHOU CITY RIJIN LOGISTICS 86-512-88160175 / www.rijin56.com / China	15	3	*	*	*	*	*	*	*	*	*	*	*	*	*	*	*	*	*	*	*	*	*	*	*	*	*	*	*	*	*	*	*	*	*	*	*	*	
SUZHOU INTORUS WAREHOUSE 86-512-69372680 / www.intorus.cn / China	3	1	*	*	*	*	*	*	*	*	*	*	*	*	*	*	*	*	*	*	*	*	*	*	*	*	*	*	*	*	*	*	*	*	*	*	*	*	
SUZHOU OCEAN LOGISTICS 86-532-68086616 / http://www.ocean56.com / Asia Pacific	10	5	*	*	*	*	*	*	*	*	*	*	*	*	*	*	*	*	*	*	*	*	*	*	*	*	*	*	*	*	*	*	*	*	*	*	*	*	
SUZHOU ORIENT BESTWAY INTERNATIONAL TRANSPORT 0086-512-85180918 / www.orient-bestway.com / China	20	1	*	*	*	*	*	*	*	*	*	*	*	*	*	*	*	*	*	*	*	*	*	*	*	*	*	*	*	*	*	*	*	*	*	*	*	*	
SUZHOU ZHONGHUI INTERNATIONAL LOGISTICS 86-512-6311 5692 / www.szhonghui.net / China	6	1	*	*	*	*	*	*	*	*	*	*	*	*	*	*	*	*	*	*	*	*	*	*	*	*	*	*	*	*	*	*	*	*	*	*	*	*	
SWIFT TRANSPORTATION 602-269-9700 / www.swifttrans.com / North America	1,189	0	*	*	*	*	*	*	*	*	*	*	*	*	*	*	*	*	*	*	*	*	*	*	*	*	*	*	*	*	*	*	*	*	*	*	*	*	
SYNCREON 248-377-4700 / www.syncreon.com / International	1,000	95	*	*	*	*	*	*	*	*	*	*	*	*	*	*	*	*	*	*	*	*	*	*	*	*	*	*	*	*	*	*	*	*	*	*	*	*	*
SYSTEM AMERICAN CARGO 305-477-2500 / www.systemamerican.com / International	14	1	*	*	*	*	*	*	*	*	*	*	*	*	*	*	*	*	*	*	*	*	*	*	*	*	*	*	*	*	*	*	*	*	*	*	*	*	*
TBB GLOBAL LOGISTICS 800-937-8224 / www.tbbgl.com / International	72	1	*	*	*	*	*	*	*	*	*	*	*	*	*	*	*	*	*	*	*	*	*	*	*	*	*	*	*	*	*	*	*	*	*	*	*	*	*
TECHNICOLOR GLOBAL LOGISTICS 805-445-4360 / www.technicolorgloballogistics.com / International	430	21	*	*	*	*	*	*	*	*	*	*	*	*	*	*	*	*	*	*	*	*	*	*	*	*	*	*	*	*	*	*	*	*	*	*	*	*	*
TEGMA GESTÃO LOGÍSTICA 55 11 4346-2532 / www.tegma.com.br / Brazil	825	20	*	*	*	*	*	*	*	*	*	*	*	*	*	*	*	*	*	*	*	*	*	*	*	*	*	*	*	*	*	*	*	*	*	*	*	*	*
TH MASON LOGISTICS 86-755-8268 4788 / www.thmason.com / China	70	0	*	*	*	*	*	*	*	*	*	*	*	*	*	*	*	*	*	*	*	*	*	*	*	*	*	*	*	*	*	*	*	*	*	*	*	*	*
THE LEADER LOGISTICS 86-10-81575656 / www.dld56.com / China	50	5	*	*	*	*	*	*	*	*	*	*	*	*	*	*	*	*	*	*	*	*	*	*	*	*	*	*	*	*	*	*	*	*	*	*	*	*	*
THE TERMINAL CORPORATION 800-560-7207 / www.termcorp.com / North America	15	9	*	*	*	*	*	*	*	*	*	*	*	*	*	*	*	*	*	*	*	*	*	*	*	*	*	*	*	*	*	*	*	*	*	*	*	*	*
TIGERS LIMITED 852 2799 8000 / www.go2tigers.com / International	520	3	*	*	*	*	*	*	*	*	*	*	*	*	*	*	*	*	*	*	*	*	*	*	*	*	*	*	*	*	*	*	*	*	*	*	*	*	*
TITO GLOBAL TRADE SERVICES 55 11 2102-9300 / www.titonline.com / International	24	0	*	*	*	*	*	*	*	*	*	*	*	*	*	*	*	*	*	*	*	*	*	*	*	*	*	*	*	*	*	*	*	*	*	*	*	*	*
TMM LOGISTICS 52 55 5629 8866 / www.grupotmm.com / Mexico	17	12	*	*	*	*	*	*	*	*	*	*	*	*	*	*	*	*	*	*	*	*	*	*	*	*	*	*	*	*	*	*	*	*	*	*	*	*	*
TOLL GLOBAL FORWARDING 852 3402 1500 / www.tollgroup.com/tollglobalforwarding / International	1,468	30	*	*	*	*	*	*	*	*	*	*	*	*	*	*	*	*	*	*	*	*	*	*	*	*	*	*	*	*	*	*	*	*	*	*	*	*	*
TOLL HOLDINGS 61 3 9694 2888 / www.tollgroup.com / International	6,266	650	*	*	*	*	*	*	*	*	*	*	*	*	*	*	*	*	*	*	*	*	*	*	*	*	*	*	*	*	*	*	*	*	*	*	*	*	*
TOPOCEAN GROUP 562-908-1688 / www.topocean.com / International	250	4	*	*	*	*	*	*	*	*	*	*	*	*	*	*	*	*	*	*	*	*	*	*	*	*	*	*	*	*	*	*	*	*	*	*	*	*	*
TOTAL QUALITY LOGISTICS 513-831-2600 / www.tql.com / North America	1,621	0	*	*	*	*	*	*	*	*	*	*	*	*	*	*	*	*	*	*	*	*	*	*	*	*	*	*	*	*	*	*	*	*	*	*	*	*	*
TRADISA 34 722 111 964 / www.tradisa.com / Europe	305	32	*	*	*	*	*	*	*	*	*	*	*	*	*	*	*	*	*	*	*	*	*	*	*	*	*	*	*	*	*	*	*	*	*	*	*	*	*

3PL SERVICES DIRECTORY



3PL

phone number / website / market area

	TOTAL LOGISTICS REVENUE (US\$ MILLIONS)	NUMBER OF WAREHOUSES	SCM SYSTEMS				TRANSPORTATION MANAGEMENT							WAREHOUSE MANAGEMENT					SPECIAL SKILLS																				
			TMS (TRANSPORTATION MANAGEMENT SYSTEM)	TMS PLANNING/OPTIMIZATION	WMS (WAREHOUSE MANAGEMENT SYSTEM)	ORDER MANAGEMENT SYSTEM (OMS OR ERP)	CARRIER MANAGEMENT & CONTRACTING	DEDICATED CONTRACT CARRIAGE	FREIGHT BROKERAGE	RAIL	POOL DISTRIBUTION	MERGE IN TRANSIT	HOME DELIVERY	INSTALLATION/REMOVAL	AIR FREIGHT FORWARDING	OCEAN FREIGHT FORWARDING	INVOC	CUSTOMS	PORT SERVICES	INVENTORY CONTROL/VENDOR MANAGEMENT	PICK/PACK	KITTING	SUB ASSEMBLY	JUST-IN-TIME (JIT) OPERATIONS	HAZARDOUS MATERIALS	TEMPERATURE CONTROLLED	ISO CERTIFIED LOCATIONS	CALL CENTERS	ORDER MANAGEMENT	REVERSE LOGISTICS MANAGEMENT	BULK COMMODITIES HANDLING	CONSULTING SERVICES	LEAD LOGISTICS PROVIDER						
TRANS-CHINA LOGISTICS 86-592-6033 666 / www.trans-china.com / China	20	0	*										*	*	*	*	*																						
TRANSGROUP WORLDWIDE LOGISTICS 800-444-0294 / www.transgroup.com / International	280	40	*	*	*	*	*	*	*	*	*	*	*	*	*	*	*	*	*	*	*	*	*	*	*	*	*	*	*	*	*	*	*	*	*	*	*	*	
TRANS-HOPE INTERNATIONAL LOGISTICS 86-0532-86678899 / www.th-logistics.com / China	40	1	*	*	*	*	*	*	*	*	*	*	*	*	*	*	*	*	*	*	*	*	*	*	*	*	*	*	*	*	*	*	*	*	*	*	*	*	
TRANSPACE 972-731-4500 / www.transpace.com / North America	1,400	4	*	*	*	*	*	*	*	*	*	*	*	*	*	*	*	*	*	*	*	*	*	*	*	*	*	*	*	*	*	*	*	*	*	*	*	*	
TRANSPORT CORPORATION OF INDIA 91-124-2381603 / www.tcil.com / International	97	100	*	*	*	*	*	*	*	*	*	*	*	*	*	*	*	*	*	*	*	*	*	*	*	*	*	*	*	*	*	*	*	*	*	*	*	*	
TRANSPORTADORA AMERICANA 55 19 2108 9000 / www.tanet.com.br / Brazil	85	34	*	*	*	*	*	*	*	*	*	*	*	*	*	*	*	*	*	*	*	*	*	*	*	*	*	*	*	*	*	*	*	*	*	*	*	*	*
TRANSPORTATION INSIGHT 828-485-5000 / www.transportationinsight.com / North America	803	80	*	*	*	*	*	*	*	*	*	*	*	*	*	*	*	*	*	*	*	*	*	*	*	*	*	*	*	*	*	*	*	*	*	*	*	*	*
TRANSPORTATION SOLUTIONS ENTERPRISES 312-698-8158 / www.tse-llc.com / North America	255	2	*	*	*	*	*	*	*	*	*	*	*	*	*	*	*	*	*	*	*	*	*	*	*	*	*	*	*	*	*	*	*	*	*	*	*	*	*
TRANZACT TECHNOLOGIES 630-833-0890 / www.tranzact.com / North America	65	0	*	*	*	*	*	*	*	*	*	*	*	*	*	*	*	*	*	*	*	*	*	*	*	*	*	*	*	*	*	*	*	*	*	*	*	*	*
TRINITY LOGISTICS 800-846-3400 / www.trinitylogistics.com / North America	272	0	*	*	*	*	*	*	*	*	*	*	*	*	*	*	*	*	*	*	*	*	*	*	*	*	*	*	*	*	*	*	*	*	*	*	*	*	*
TTS 214-778-0800 / www.tts-us.com / North America	500	6	*	*	*	*	*	*	*	*	*	*	*	*	*	*	*	*	*	*	*	*	*	*	*	*	*	*	*	*	*	*	*	*	*	*	*	*	*
U.S. XPRESS ENTERPRISES 423-510-3000 / www.usxpress.com / North America	618	28	*	*	*	*	*	*	*	*	*	*	*	*	*	*	*	*	*	*	*	*	*	*	*	*	*	*	*	*	*	*	*	*	*	*	*	*	*
UNITED FACILITIES 866-699-7271 / www.unifac.com / North America	33	9	*	*	*	*	*	*	*	*	*	*	*	*	*	*	*	*	*	*	*	*	*	*	*	*	*	*	*	*	*	*	*	*	*	*	*	*	*
UNIVERSAL TRAFFIC SERVICE 800-383-3024 / www.utsnet.com / U.S.	60	0	*	*	*	*	*	*	*	*	*	*	*	*	*	*	*	*	*	*	*	*	*	*	*	*	*	*	*	*	*	*	*	*	*	*	*	*	*
UNIVERSAL TRUCKLOAD SERVICES 586-920-0100 Ext. 2127 / www.goutsi.com / North America	467	43	*	*	*	*	*	*	*	*	*	*	*	*	*	*	*	*	*	*	*	*	*	*	*	*	*	*	*	*	*	*	*	*	*	*	*	*	*
UNYSON LOGISTICS 314-819-6300 / www.unysonlogistics.com / North America	340	0	*	*	*	*	*	*	*	*	*	*	*	*	*	*	*	*	*	*	*	*	*	*	*	*	*	*	*	*	*	*	*	*	*	*	*	*	*
UPS SUPPLY CHAIN SOLUTIONS 800-742-5727 / www.ups-scs.com / Global	5,492	599	*	*	*	*	*	*	*	*	*	*	*	*	*	*	*	*	*	*	*	*	*	*	*	*	*	*	*	*	*	*	*	*	*	*	*	*	*
UTI WORLDWIDE 562-552-9400 / www.go2uti.com / Global	4,441	230	*	*	*	*	*	*	*	*	*	*	*	*	*	*	*	*	*	*	*	*	*	*	*	*	*	*	*	*	*	*	*	*	*	*	*	*	*
VANOCEAN INTERNATIONAL FREIGHT 86-755-22167072 / www.van-ocean.com / China	20	0	*	*	*	*	*	*	*	*	*	*	*	*	*	*	*	*	*	*	*	*	*	*	*	*	*	*	*	*	*	*	*	*	*	*	*	*	*
VERSACOLD LOGISTICS SERVICES 604-255-4656 / www.versacold.com / Canada	300	38	*	*	*	*	*	*	*	*	*	*	*	*	*	*	*	*	*	*	*	*	*	*	*	*	*	*	*	*	*	*	*	*	*	*	*	*	*
VERST GROUP LOGISTICS 859-485-1212 / www.verstgroup.com / U.S.-Regional	158	19	*	*	*	*	*	*	*	*	*	*	*	*	*	*	*	*	*	*	*	*	*	*	*	*	*	*	*	*	*	*	*	*	*	*	*	*	*
VIBRANT GROUP 65 6262 6988 / www.vibrant.com.sg / International	138	10	*	*	*	*	*	*	*	*	*	*	*	*	*	*	*	*	*	*	*	*	*	*	*	*	*	*	*	*	*	*	*	*	*	*	*	*	*
VONDER (BEIJING) INTERNATIONAL LOGISTICS 86-10-6489 9099 / www.vonder.com.cn / China	20	1	*	*	*	*	*	*	*	*	*	*	*	*	*	*	*	*	*	*	*	*	*	*	*	*	*	*	*	*	*	*	*	*	*	*	*	*	*
WAGNER LOGISTICS 816-421-3520 / www.wagnerlogistics.com / North America	31	12	*	*	*	*	*	*	*	*	*	*	*	*	*	*	*	*	*	*	*	*	*	*	*	*	*	*	*	*	*	*	*	*	*	*	*	*	*
WARED LOGISTICS 312-560-1200 / www.waredlogistics.com / MENA	50	11	*	*	*	*	*	*	*	*	*	*	*	*	*	*	*	*	*	*	*	*	*	*	*	*	*	*	*	*	*	*	*	*	*	*	*	*	*
WAREHOUSE SERVICES 864-422-9955 / www.wsonline.com / North America	200	30	*	*	*	*	*	*	*	*	*	*	*	*	*	*	*	*	*	*	*	*	*	*	*	*	*	*	*	*	*	*	*	*	*	*	*	*	*
WEBER LOGISTICS 855-GO-WEBER / www.weberlogistics.com / U.S.-Regional	75	12	*	*	*	*	*	*	*	*	*	*	*	*	*	*	*	*	*	*	*	*	*	*	*	*	*	*	*	*	*	*	*	*	*	*	*	*	*

3PL SERVICES DIRECTORY



3PL

phone number / website / market area

		SCM SYSTEMS				TRANSPORTATION MANAGEMENT							WAREHOUSE MANAGEMENT				SPECIAL SKILLS																				
		TOTAL LOGISTICS REVENUE (US\$ MILLIONS)	NUMBER OF WAREHOUSES	TMS (TRANSPORTATION MANAGEMENT SYSTEM)	TMS PLANNING/OPTIMIZATION	WMS (WAREHOUSE MANAGEMENT SYSTEM)	ORDER MANAGEMENT SYSTEM (OMS OR ERP)	CARRIER MANAGEMENT & CONTRACTING	DEDICATED CONTRACT CARRIAGE	FREIGHT BROKERAGE	RAIL	POOL DISTRIBUTION	MERGE IN TRANSIT	HOME DELIVERY	INSTALLATION/REMOVAL	AIR FREIGHT FORWARDING	OCEAN FREIGHT FORWARDING	INVOCC	CUSTOMS	PORT SERVICES	INVENTORY CONTROL/VENDOR MANAGEMENT	PICK/PACK	KITTING	SUB ASSEMBLY	JUST-IN-TIME (JIT) OPERATIONS	HAZARDOUS MATERIALS	TEMPERATURE CONTROLLED	ISO CERTIFIED LOCATIONS	CALL CENTERS	ORDER MANAGEMENT	REVERSE LOGISTICS MANAGEMENT	BULK COMMODITIES HANDLING	CONSULTING SERVICES	LEAD LOGISTICS PROVIDER			
WEL 800-333-4415 / www.welcompanies.com / U.S.		27	12	*	*	*	*	*	*	*	*	*								*	*	*	*				*			*	*	*					
WERNER EGERLAND AUTOMOBILLOGISTIK 49-5-41-56-05-0 / www.egerland.de / Europe		101	9	*	*		*		*	*										*							*	*			*	*					
WERNER ENTERPRISES DEDICATED & LOGISTICS 800-228-2240 / www.werner.com / International		1,138	0	*	*		*	*	*	*	*	*	*	*	*	*	*	*	*	*	*	*	*	*	*	*	*	*	*	*	*	*	*	*	*		
WHEELS GROUP 800-663-6331 / www.wheelsgroup.com / North America		345	0	*	*		*	*	*	*	*	*	*	*	*	*	*	*	*	*	*	*	*	*	*	*	*	*	*	*	*	*	*	*	*		
WINCANTON 44 1249 710000 / www.wincanton.co.uk / Europe		1,695	200	*		*	*	*	*	*	*	*	*	*						*	*	*	*	*	*	*	*	*	*	*	*	*	*	*	*		
WISEPOWER TRANSPORTATION & DISTRIBUTION (GUANGZHOU) 86-20-8676 7799 / www.wtdchina.com / China		160	2	*	*	*	*	*	*	*					*	*	*	*	*	*	*	*	*	*	*	*	*	*	*	*	*	*	*	*	*		
WORLDWIDE LOGISTICS GROUP 86-21-6132 2333 / www.worldwide-logistics.cn / China		600	3	*	*	*	*	*	*	*	*	*	*	*	*	*	*	*	*	*	*	*	*	*	*	*	*	*	*	*	*	*	*	*	*	*	
WOW LOGISTICS 800-236-3565 / www.wowlogistics.com / U.S.-Regional		47	21	*	*	*	*	*	*	*	*	*	*	*					*	*	*	*	*	*	*	*	*	*	*	*	*	*	*	*	*		
WSI 920-731-3115 / www.wsinc.com / North America		150	52	*	*	*	*	*	*	*	*	*	*	*	*	*	*	*	*	*	*	*	*	*	*	*	*	*	*	*	*	*	*	*	*	*	
WUHAN DADAO LOGISTICS 86-27-83550339 / www.ddwl.com.cn / China		16	1	*	*	*	*	*	*	*		*	*	*						*	*	*	*	*	*	*	*	*	*	*	*	*	*	*	*	*	
WUHAN VICTORY FAVOURABLE LOGISTICS 86-27-8338 9639 / www.wuhanjl.com / China		60	4	*	*	*	*	*	*	*		*	*	*					*	*	*	*	*	*	*	*	*	*	*	*	*	*	*	*	*	*	
WUHU ANNTT LOGISTICS 86-553-5966450 / www.anntt.com.cn / China		200	30	*	*	*	*	*	*	*	*	*	*	*	*	*	*	*	*	*	*	*	*	*	*	*	*	*	*	*	*	*	*	*	*	*	*
XIAMEN ITG TIDAK LOGISTICS 86-592-2657333 / www.itg-logistics.com / China		160	3	*	*	*	*	*	*	*	*	*	*	*	*	*	*	*	*	*	*	*	*	*	*	*	*	*	*	*	*	*	*	*	*	*	*
XIAMEN WINTRANS LOGISTICS 86-592-8065305 / www.wintrans.com.cn / China		80	0	*	*	*	*	*	*	*	*	*	*	*	*	*	*	*	*	*	*	*	*	*	*	*	*	*	*	*	*	*	*	*	*	*	*
XPO LOGISTICS 203-413-4000 / www.xpologistics.com / North America		2,000	0	*	*	*	*	*	*	*	*	*	*	*	*	*	*	*	*	*	*	*	*	*	*	*	*	*	*	*	*	*	*	*	*	*	*
YOBEL SUPPLY CHAIN MANAGEMENT 511-614-3400 / www.yobelscm.biz / International		140	20	*	*	*	*	*	*	*	*	*	*	*	*	*	*	*	*	*	*	*	*	*	*	*	*	*	*	*	*	*	*	*	*	*	*
YUSEN LOGISTICS 03-6703-8111 / www.yusen-logistics.com/global/ / Global		4,042	469	*	*	*	*	*	*	*	*	*	*	*	*	*	*	*	*	*	*	*	*	*	*	*	*	*	*	*	*	*	*	*	*	*	*
ZE HAN LOGISTICS 86-0532-8787777 / www.zehan.com.cn / China		30	1	*	*	*	*	*	*	*		*	*	*					*	*	*	*	*	*	*	*	*	*	*	*	*	*	*	*	*	*	*
ZEPHYR LOGISTICS 86-10-8471 5588 / www.zephyrlogistics.com / China		70	3	*	*	*	*	*	*	*					*	*	*	*	*	*	*	*	*	*	*	*	*	*	*	*	*	*	*	*	*	*	*
ZHEJIANG CHASEN FREIGHT FORWARDING 86-571-8526 4050 / www.chasenshipping.com / China		50	0	*	*	*	*	*	*	*					*	*	*	*	*	*	*	*	*	*	*	*	*	*	*	*	*	*	*	*	*	*	*
ZHEJIANG INT'L LOGISTICS 86-571-8538 2171 / wl.intlmedic.com / China		15	2	*	*	*	*	*	*	*		*	*	*					*	*	*	*	*	*	*	*	*	*	*	*	*	*	*	*	*	*	*
ZHEJIANG JIULONG INTERNATIONAL LOGISTICS 86-574-8719 9888 / www.jll.com.cn / China		80	1	*	*	*	*	*	*	*		*	*	*					*	*	*	*	*	*	*	*	*	*	*	*	*	*	*	*	*	*	*
ZHEJIANG LUTONG LOGISTICS 86-576-8571 6677 / www.zjltwl.com / China		65	1	*	*	*	*	*	*	*		*	*	*					*	*	*	*	*	*	*	*	*	*	*	*	*	*	*	*	*	*	*
ZHEJIANG SUNMARR INTERNATIONAL TRANSPORTATION 86-571-82376666 / www.sunmarr.com / China		55	1	*	*	*	*	*	*	*		*	*	*					*	*	*	*	*	*	*	*	*	*	*	*	*	*	*	*	*	*	*
ZIMAG LOGISTICS 52 55 1940 1900 / www.sezimag.com.mx / Mexico		80	14	*	*	*	*	*	*	*		*	*	*					*	*	*	*	*	*	*	*	*	*	*	*	*	*	*	*	*	*	*

We have The Skill & The WillSM to creatively solve your transportation challenges. Our laser focus is on minimizing the effects of freight transportation challenges with a customized solution for specific needs.

From small business owners to Fortune 100 companies, our loyal customers benefit from complementary services and solutions from a source that's been delivering on a promise of quality for more than 90 years. No matter the challenge, we'll find a way.

3801 Old Greenwood Road
Fort Smith, AR 72903
800-610-5544
abf.com



Use **C.H. ROBINSON** to Accelerate Your Advantage[®] in the global supply chain. A single, global technology platform, operated by logistics professionals, enables shipment optimization and data integration for a variety of industries, including produce sourcing.

Customers obtain visibility to inbound and outbound freight and details about global supply chain costs that they may not be able to gather on their own. All of this simplifies the complexities of international trade for companies of any size.



Founded in 1969, **MACQUARIE** is a global financial services firm with a focus on providing a diversified range of capabilities to institutional and corporate clients and counterparties around the world.

The firm specializes in corporate finance, advisory, equity and debt capital markets, structuring and distribution, private equity placements and principal investments.

With extensive expertise across sectors, **MACQUARIE** delivers effective solutions to a broad range of clients around the globe.



TOTE is a leading transportation and logistics company, overseeing some of the most trusted companies in the United States.

TOTE Maritime brings unmatched reliability and service to the Alaska and Puerto Rico markets.

TOTE Services offers crewing and technical services for commercial, privately owned and U.S. government vessels. Carlisle Transportation ensures freight arrives in perfect condition to the world's most challenging destinations.

TOTE is part of the Saltchuk family of companies.
www.toteinc.com

